

BE! MOBILE

Installation Instructions

**PLEASE READ ALL INSTRUCTIONS
BEFORE INSTALLATION**



INCLUDED HARDWARE

The packaging of one be! Mobile unit consists of:

- One (1) 67.375" x 40" center panel with glass
- Four (4) legs with caster attached (**Fig. A**)
- Twelve (12) threaded standoffs (**Fig. B**)
- Two (2) allen keys (**Fig. C**)
- Twenty four (24) M8 flat head socket cap screws (**Fig. D**)

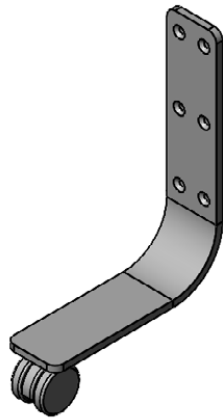


Fig. A Leg with caster, QTY: 4



Fig. B Threaded standoff, QTY: 12

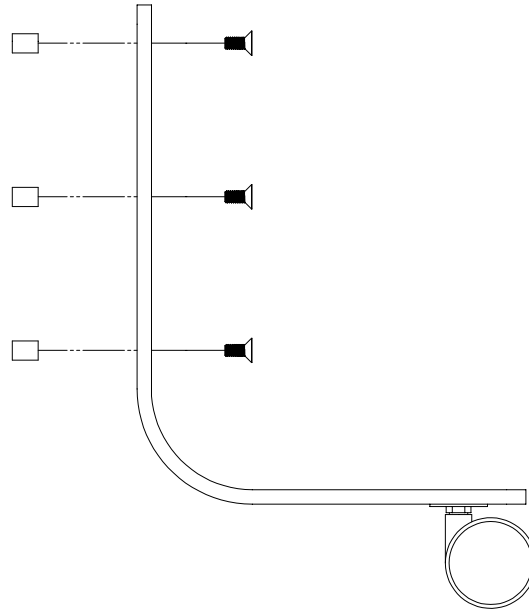


Fig. C Allen Key, QTY: 2



Fig. D M8 flat head socket cap screw, QTY: 24

Fig. E



STEP 1

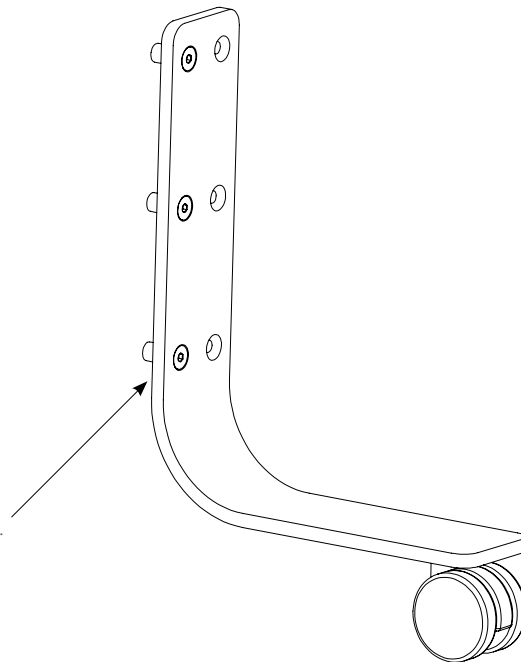
Place the leg on any flat surface, (leg must always be oriented so it looks like an 'L' when seen from the top).

Align three (3) M8 flat head socket screws with the left three (3) counter-sunk holes on the leg and then, by hand, attach three (3) threaded standoffs from the other side of the foot (**Fig. E**).

Standoffs should always be on the left side of the leg (**Fig. F**).

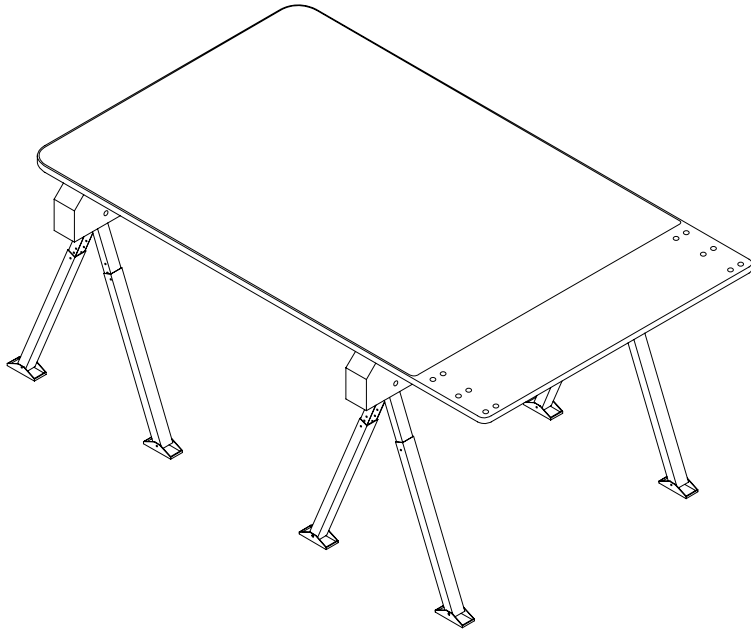
Repeat for remaining legs.

Fig. F



Always put standoffs on left row of holes.
Right row of holes should be left empty.

Fig. G



STEP 2

Place the center panel with glass on a flat surface. Make sure the holes are away from the flat surface to give more room to assemble the legs (**Fig. G**).

STEP 3

Align the legs from both sides of the glass (**Fig. H**). Best completed with two (2) people.

Fig. H

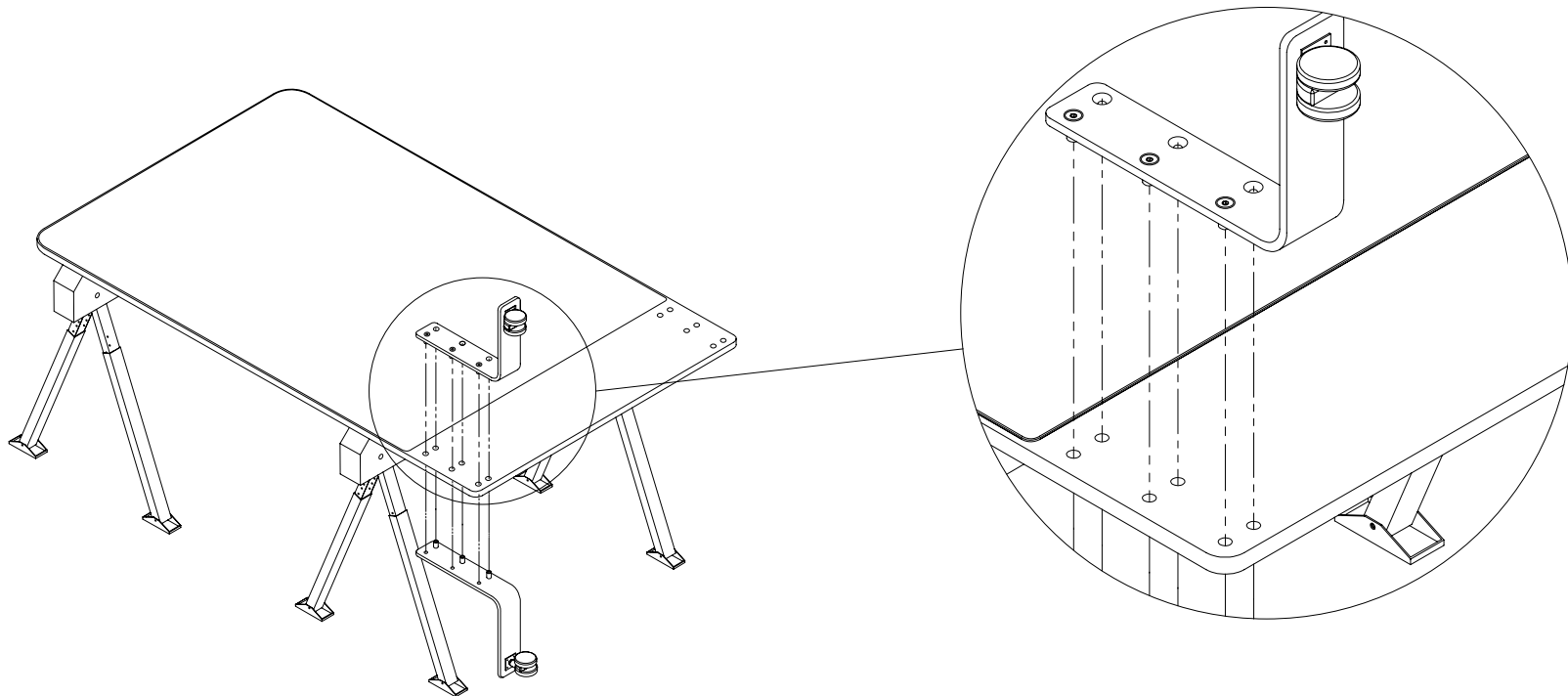
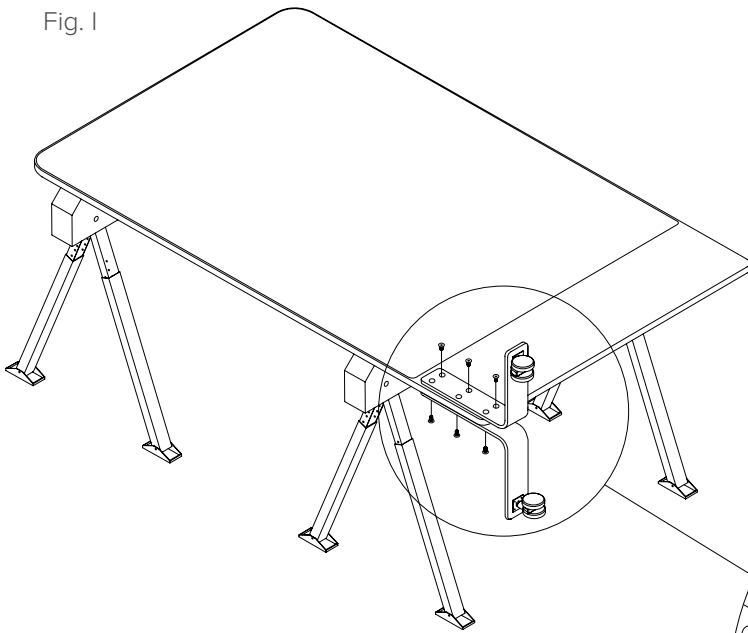


Fig. I



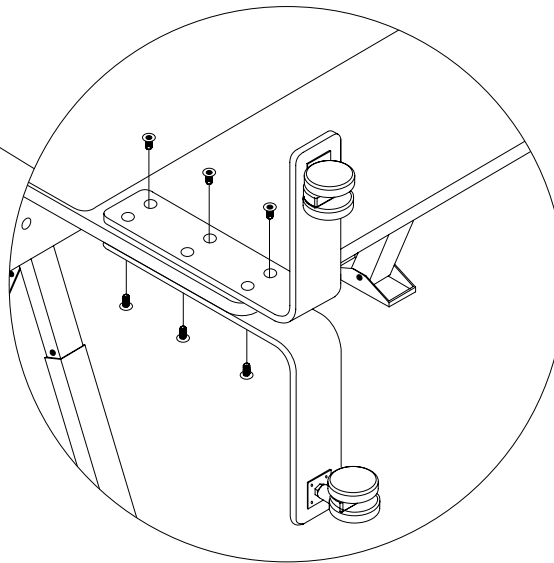
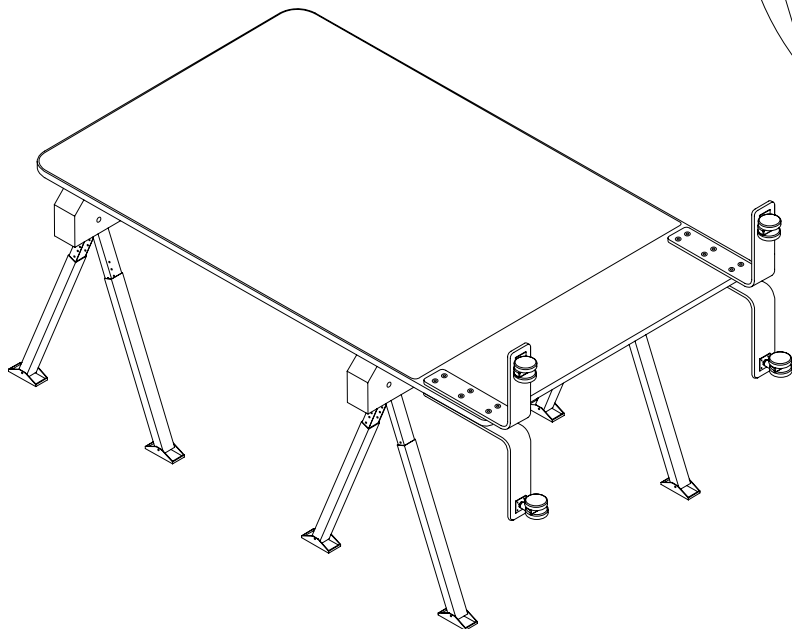
STEP 4

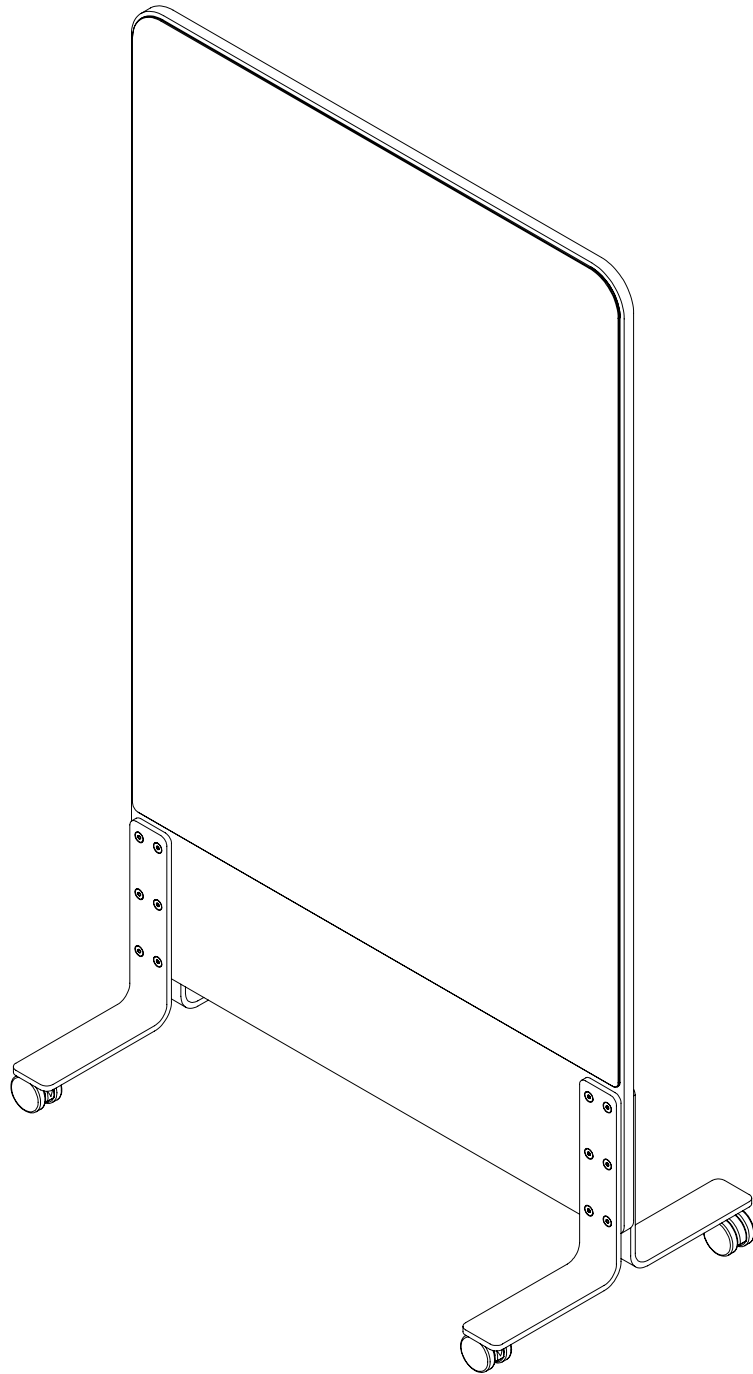
Hold the glass and legs together and begin to screw the six (6) screws into the empty holes of the feet by hand. Tighten with provided allen keys. Best completed with two (2) people.

STEP 5

Repeat Step 4 for remaining legs (**Fig. J**).

Fig. J





STEP 6

Your be! Mobile is now assembled and ready!
Let the collaboration begin!