

BE! SHIELD™

Installation Instructions

TABLE OF CONTENTS

PLEASE READ ALL INSTRUCTIONS
BEFORE INSTALLATION

03

STANDARD LEG CONFIGURATION: FREE STANDING

09

LEG VARIATION: CLAMP

16

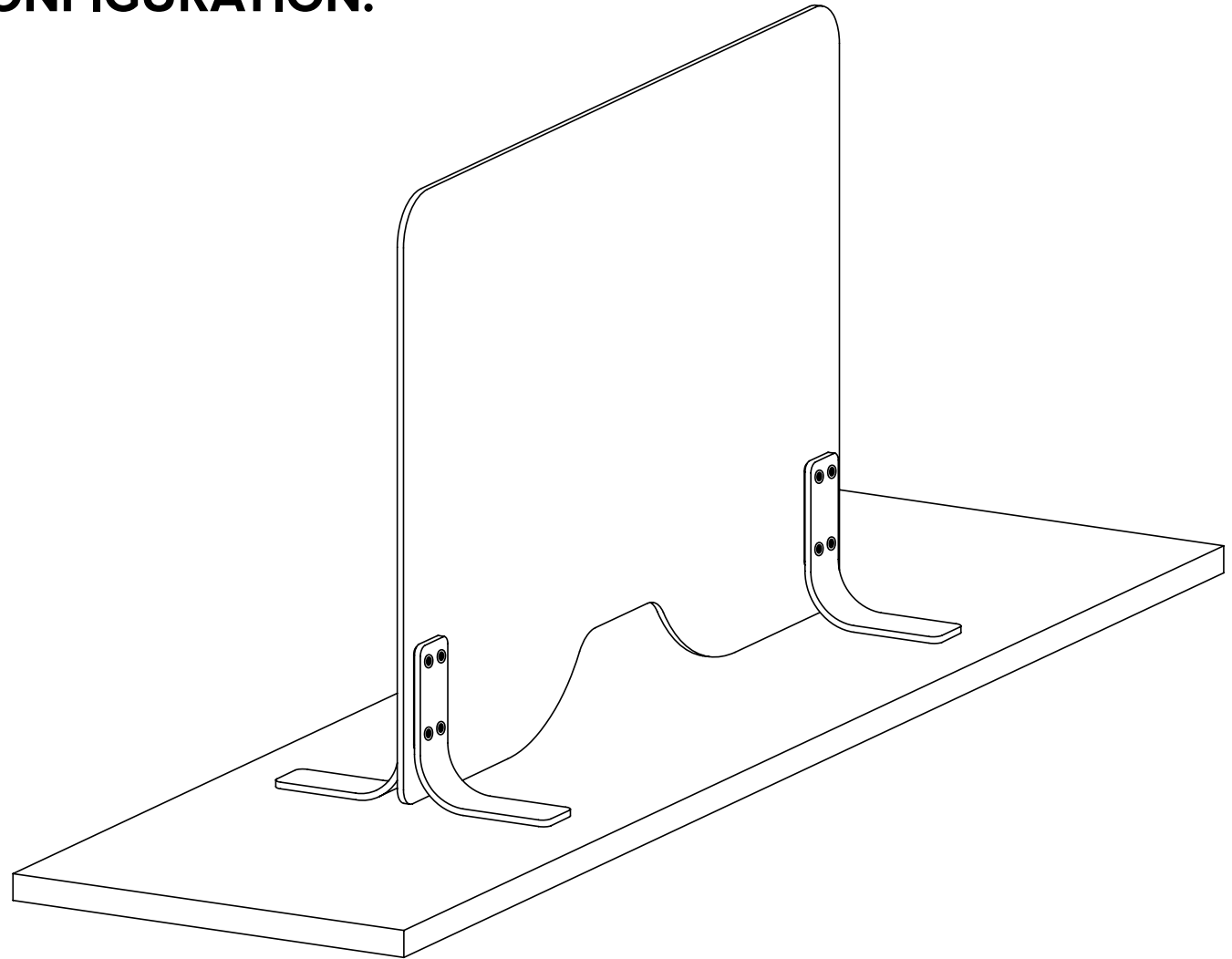
LEG VARIATION: BACK BOLT

23

LEG VARIATION: FRONT & BACK BOLT

BE! SHIELD™

**STANDARD LEG CONFIGURATION:
FREE STANDING**



INCLUDED HARDWARE

The packaging of one free standing be! Shield unit consists of:

- One (1) 3/8" (10mm) thick glass panel
- Four (4) legs with rubber pad bottoms (**Fig. A**)
- Four (4) spacer plates (**Fig. B**)
- Eight (8) plastic bushings (**Fig. C**)
- Two (2) allen keys (**Fig. D**)
- Eight (8) threaded inserts (**Fig. E**)
- Sixteen (16) 18mm countersunk screws (**Fig. F**)
- Four (4) 1/16" (1.5mm) plastic shims (**Fig. G**)*

**For 1/4" (6mm) glass orders only*

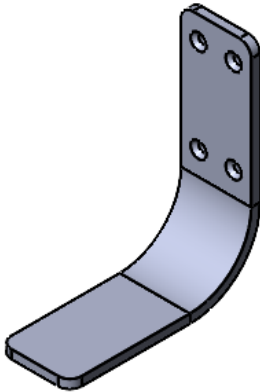


Fig. A Leg with rubber pad at bottom QTY: 4

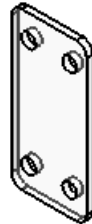


Fig. B Spacer plate QTY: 4



Fig. C Plastic bushing QTY: 8



Fig. D Allen Key, QTY: 2



Fig. E Threaded insert QTY: 8



Fig. F 18mm Countersunk screw QTY: 16

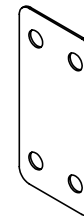
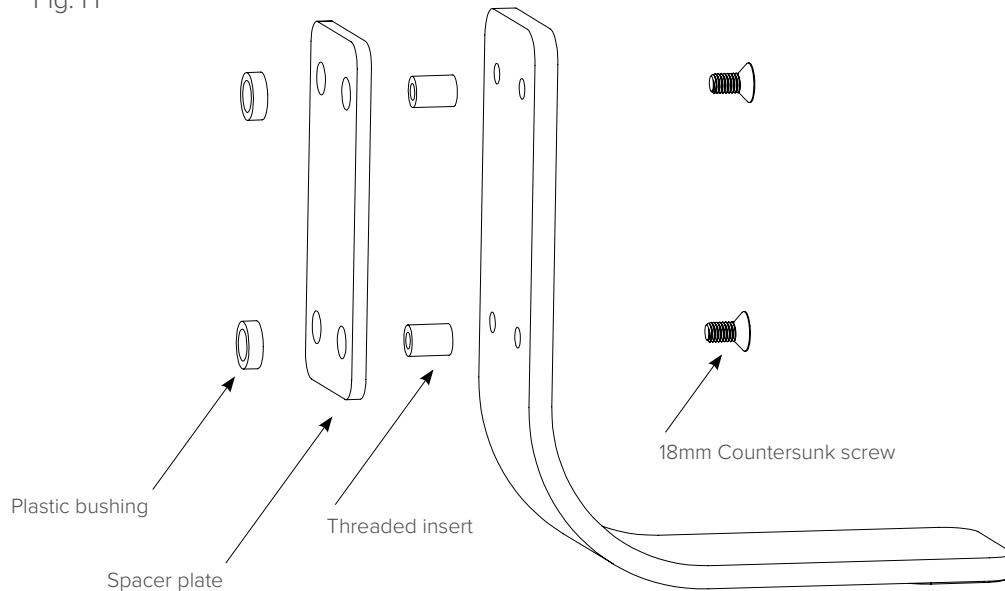


Fig. G 1/16" (1.5mm) plastic shim QTY: 4

Fig. H



STEP 1

Attach the flat head screws, threaded inserts, plastic shim plate, and plastic bushing to each leg with rubber pad.

Align two (2) screws with left two (2) counter-sunk holes on leg and then, by hand, attach two (2) threaded inserts from other side of leg as shown (Fig. H).

Threaded inserts should always be on the left side of leg as shown. Align plastic shim plate and plastic bushings with threaded inserts and sandwich them together with leg and threaded inserts as shown (Fig. I).

Repeat same process described above for all legs.

FOR 1/4" (6MM) GLASS ORDERS ONLY

For 1/4" (6mm) glass installation, insert additional 1/16" (1.5mm) shim between the spacer plate and the plastic bushings as shown below (Fig. J). This extra shim will be on both sides of the glass.

Fig. I

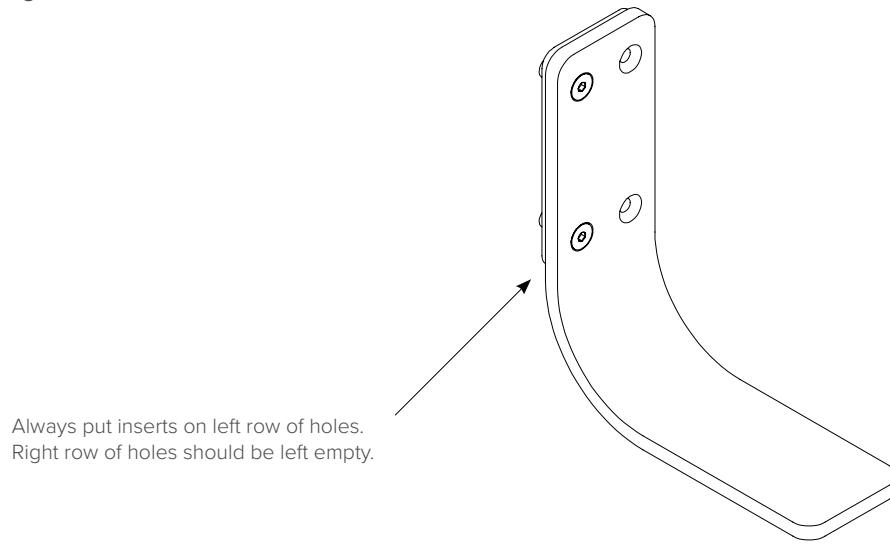


Fig. J

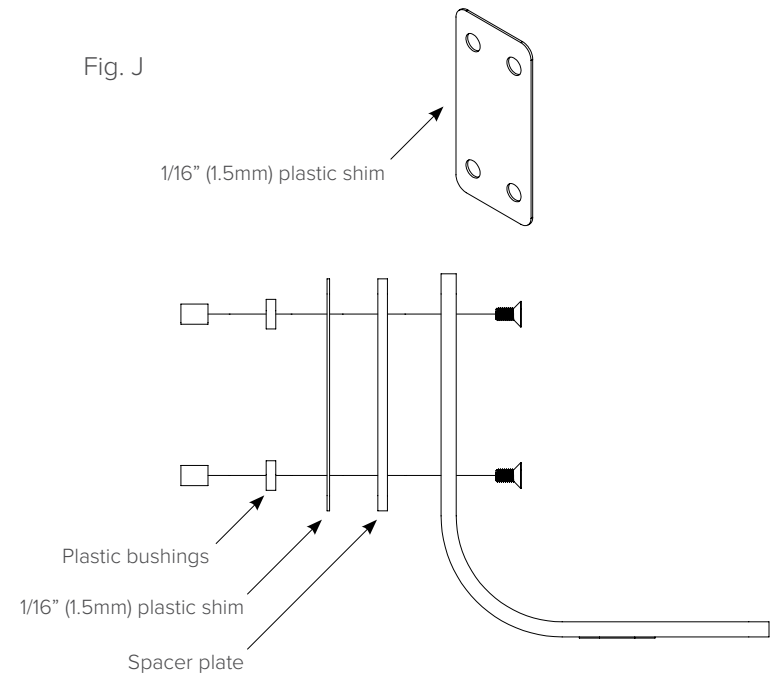
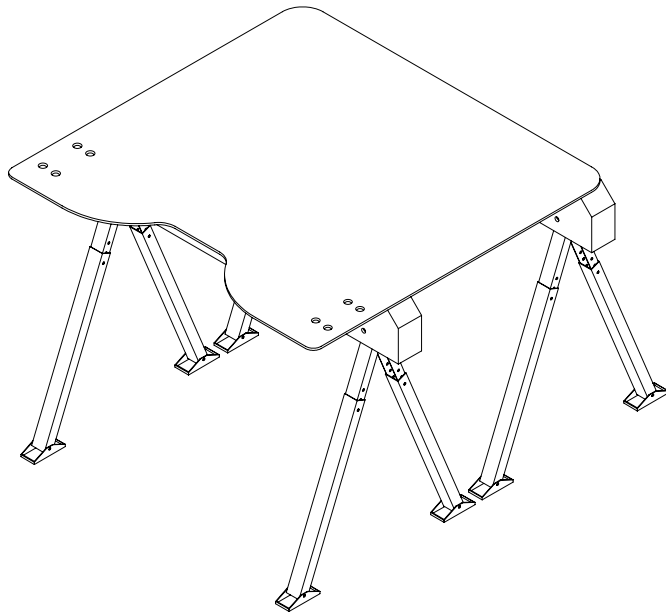


Fig. K



STEP 2

Place glass on a flat surface. Make sure holes are away from flat surface to give more room to assemble legs as shown (Fig. K).

Align leg along with spacer plate and plastic bushings from both the directions of the glass as shown (Fig. L).

Best completed with two (2) people.

Fig. L

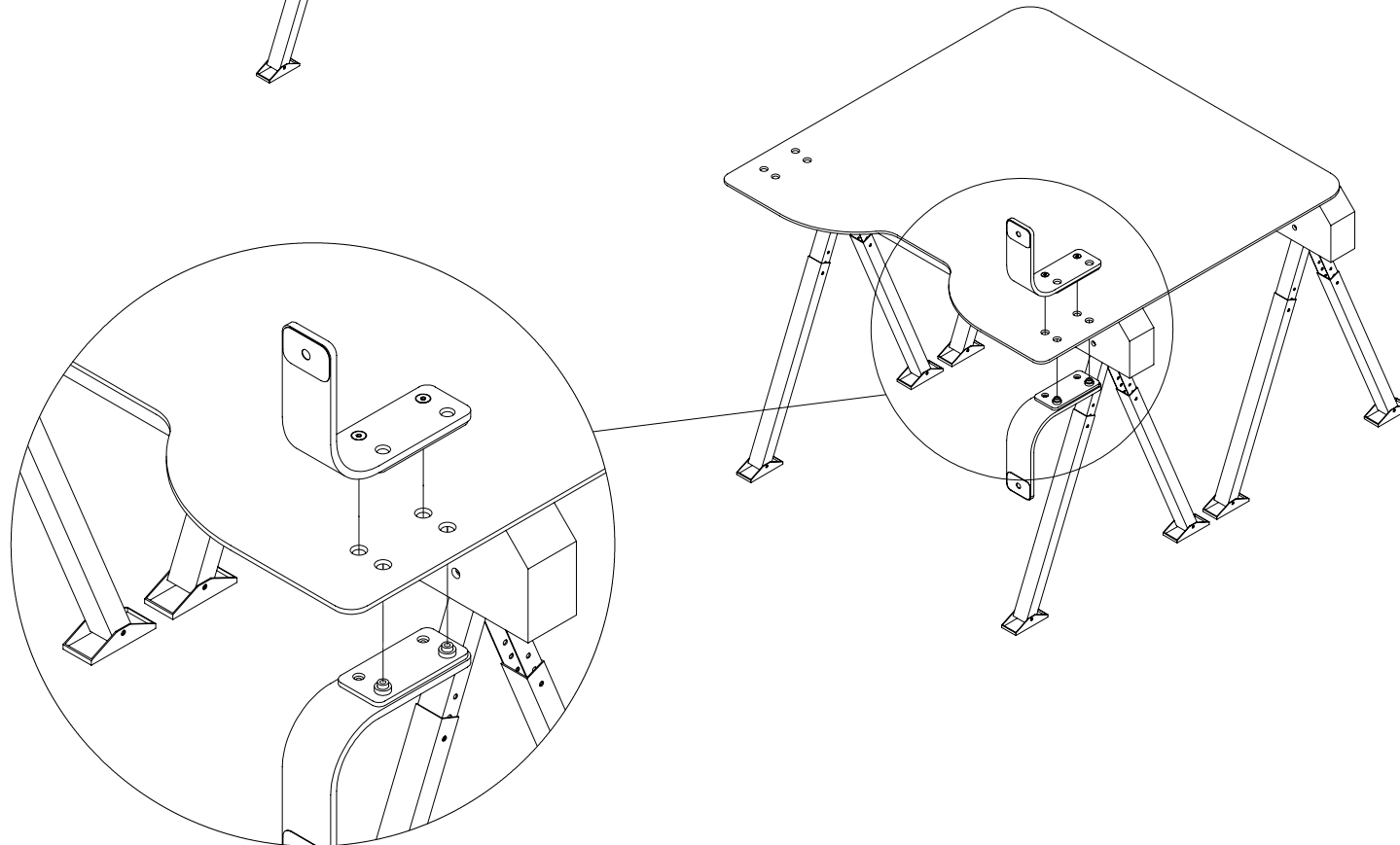
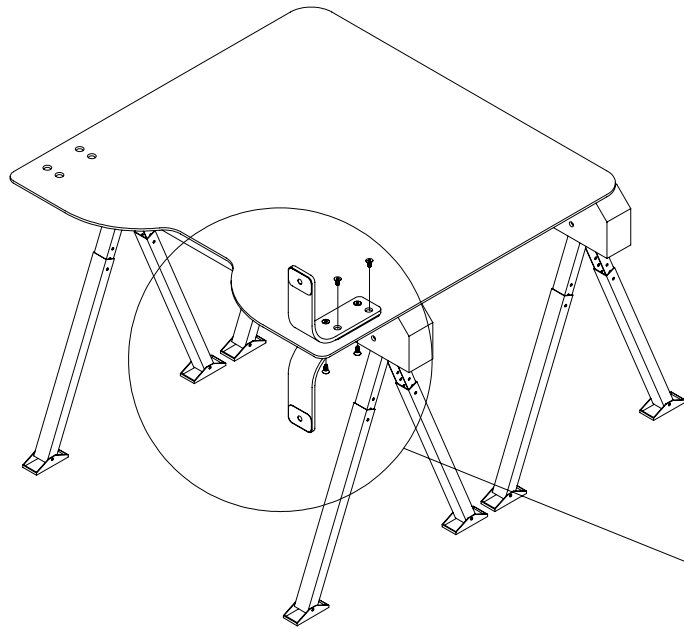


Fig. M



STEP 3

While one (1) person holds glass and legs together, a second person should start four (4) screws into empty holes of legs by hand and tighten them with allen keys provided (**Fig. M**).

Attach legs on other side of glass as described in the previous steps (**Fig. N**).

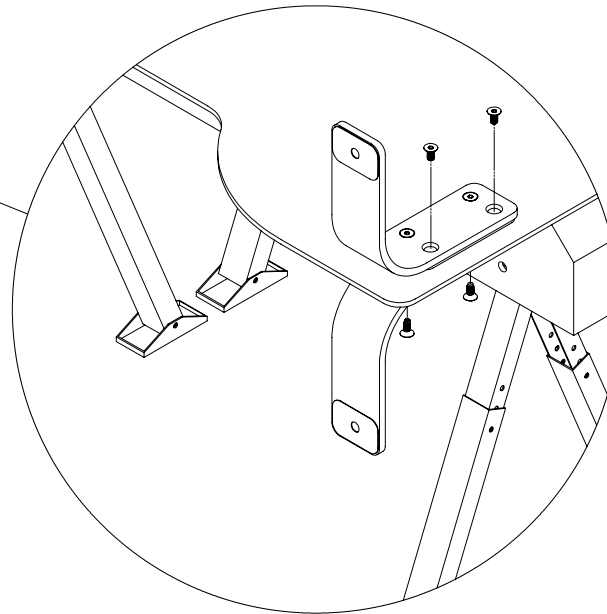
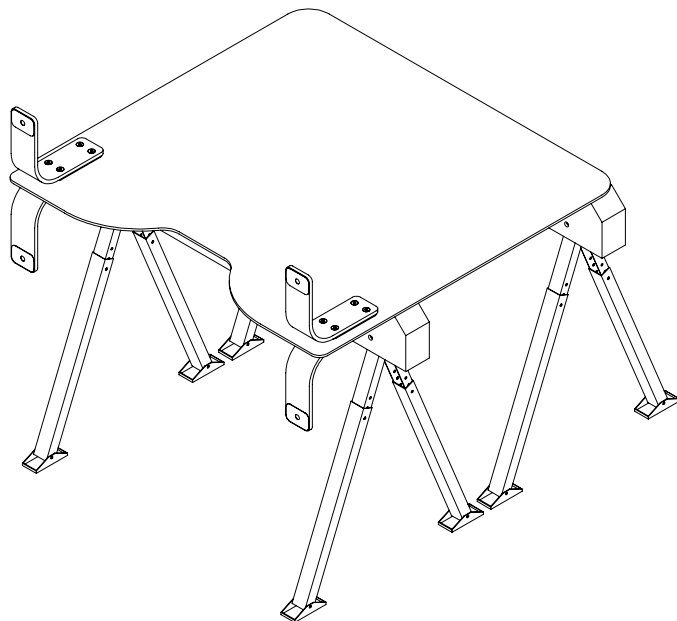


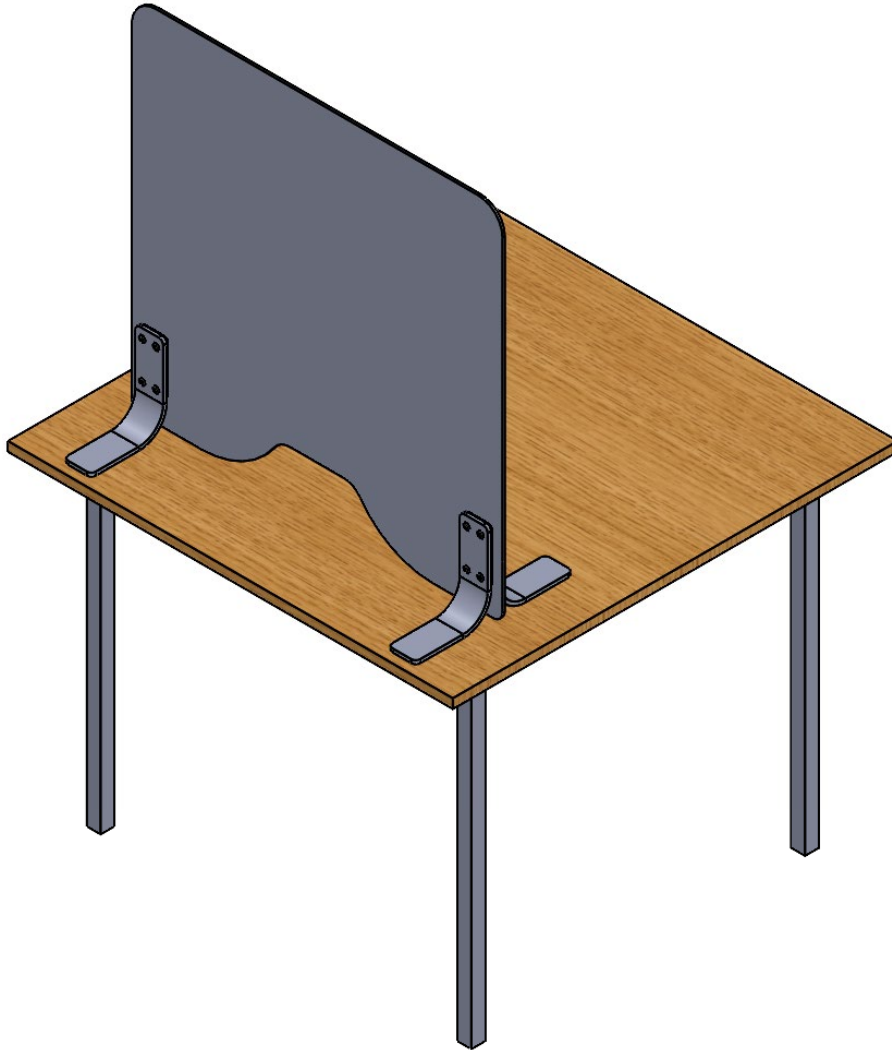
Fig. N



STEP 4

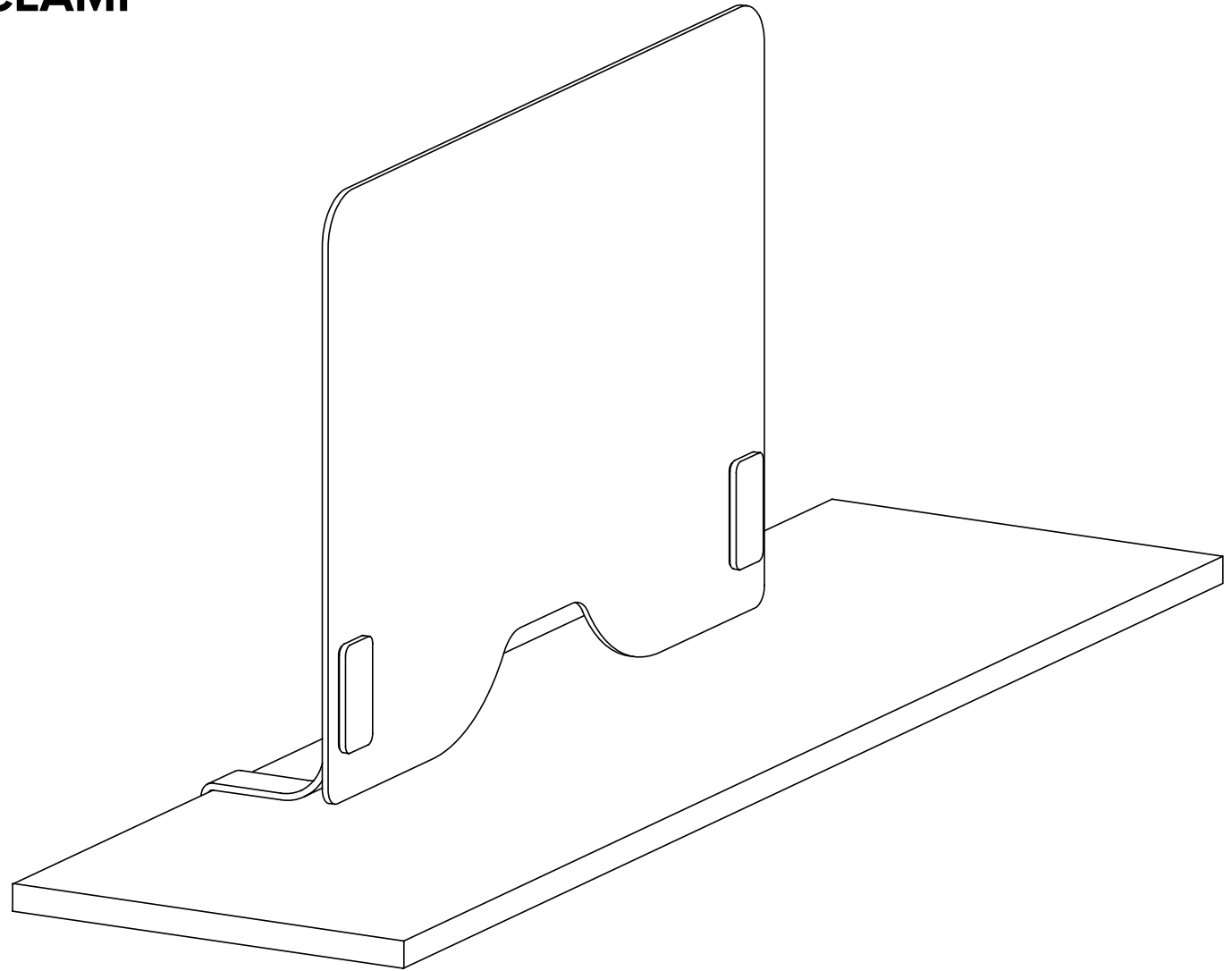
When all legs are installed, gently set be! Shield upright.
Best completed with two (2) people.

Your be! Shield is now assembled and ready!



BE! SHIELD™

LEG VARIATION: CLAMP



INCLUDED HARDWARE

The packaging of one clamp be! Shield unit consists of:

- One (1) 3/8" (10mm) thick glass panel
- Two (2) legs with rubber pad bottoms (**Fig. A**)
- Four (4) spacer plates (**Fig. B**)
- Two (2) front plates (**Fig. C**)
- Two (2) pressure plates (**Fig. D**)
- Eight (8) 12mm set screws (**Fig. E**)
- Eight (8) plastic bushings (**Fig. F**)
- Two (2) allen keys (**Fig. G**)
- Eight (8) 18mm countersunk screws (**Fig. H**)
- Four (4) 60mm countersunk screws (**Fig. I**)
- Eight (8) threaded inserts (**Fig. J**)
- Four (4) 1/16" (1.5mm) plastic shims (**Fig. K**)*

**For 1/4" (6mm) glass orders only*

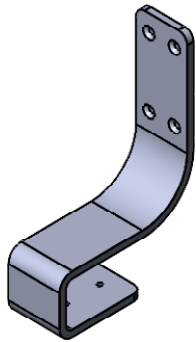


Fig. A Leg with rubber pads at bottom QTY: 2



Fig. B Spacer plate QTY: 4



Fig. C Front plate QTY: 2

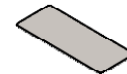


Fig. D Pressure plate QTY: 2



Fig. E 12mm Set screw QTY: 8



Fig. F Plastic bushing QTY: 8



Fig. G Allen key QTY: 2



Fig. H 18mm Countersunk screw QTY: 8



Fig. I 60mm Countersunk screw QTY: 4



Fig. J Threaded insert QTY: 8

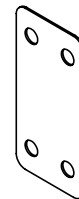


Fig. K 1/16" (1.5mm) plastic shim QTY: 4

Fig. L

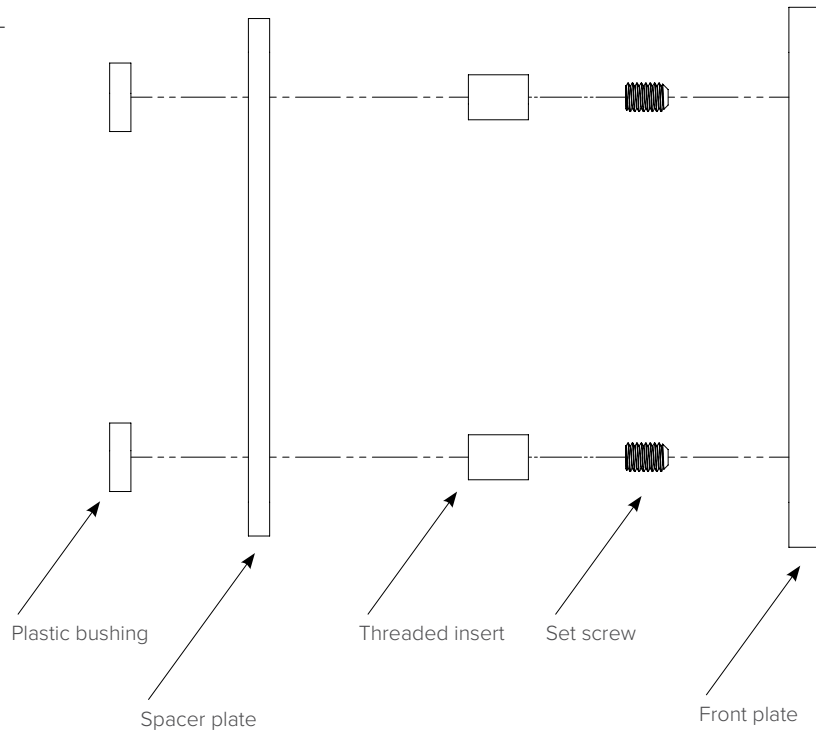
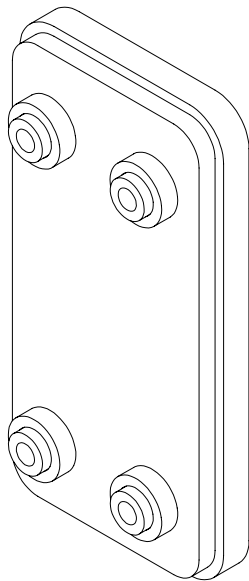


Fig. M



STEP 1

Attach the set screws, threaded inserts, plastic shim plate, and plastic bushing to each front plate.

Place front plate on any flat surface and drive four (4) set screws with four (4) threaded inserts on front plate. Then, by hand, attach inserts to each set screw on front plate (**Fig. L**).

Align plastic shim plate and plastic bushings with threaded inserts and sandwich them together with the front plate and inserts as shown (**Fig. M**).

Repeat same process described above with other front plate.

FOR 1/4" (6MM) GLASS ORDERS ONLY

For 1/4" (6mm) glass installation, insert additional 1/16" (1.5mm) shim between the spacer plate and the plastic bushings as shown below (**Fig. N**). This extra shim will be on both sides of the glass.

Fig. N

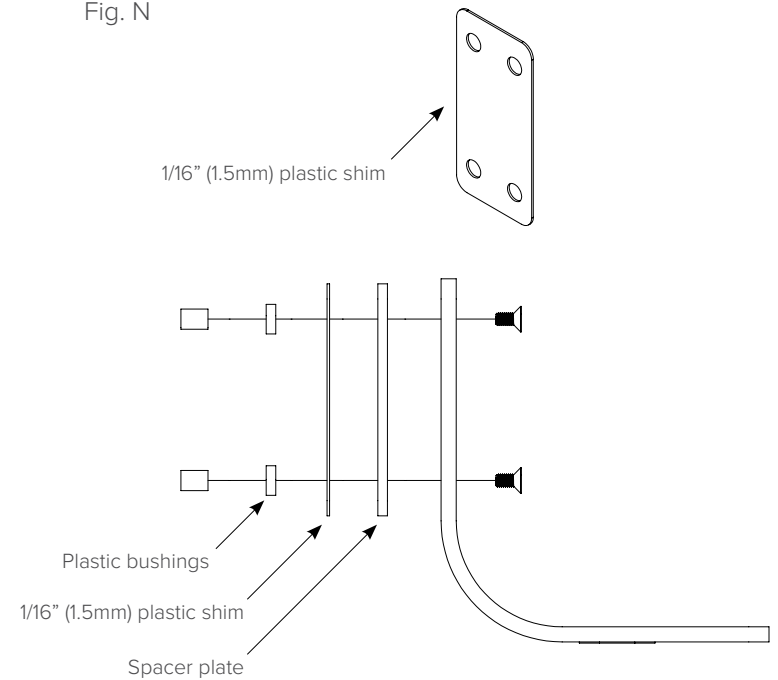
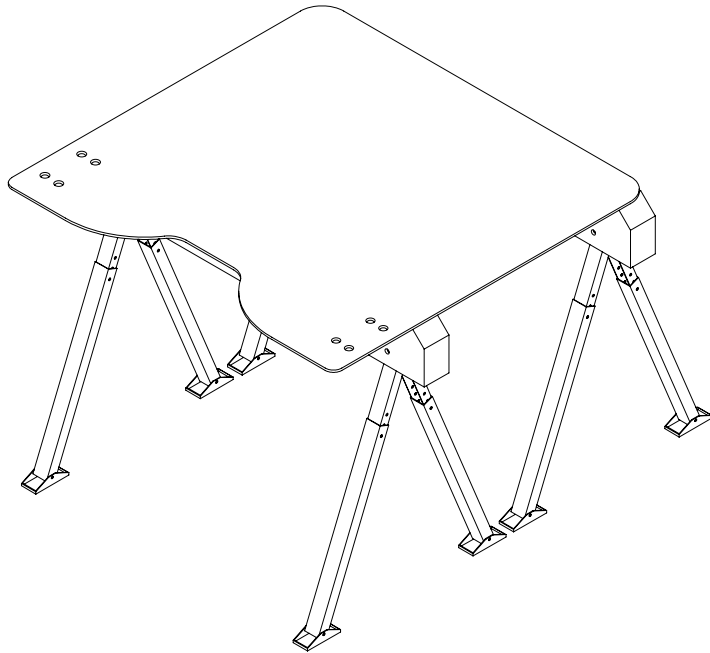


Fig. O



STEP 2

Place glass on a flat surface. Make sure holes are away from flat surface to give more room to assemble legs as shown (Fig. O).

Hold previously assembled front plate assembly against the glass (Fig. P).

Best completed with two (2) people.

Fig. P

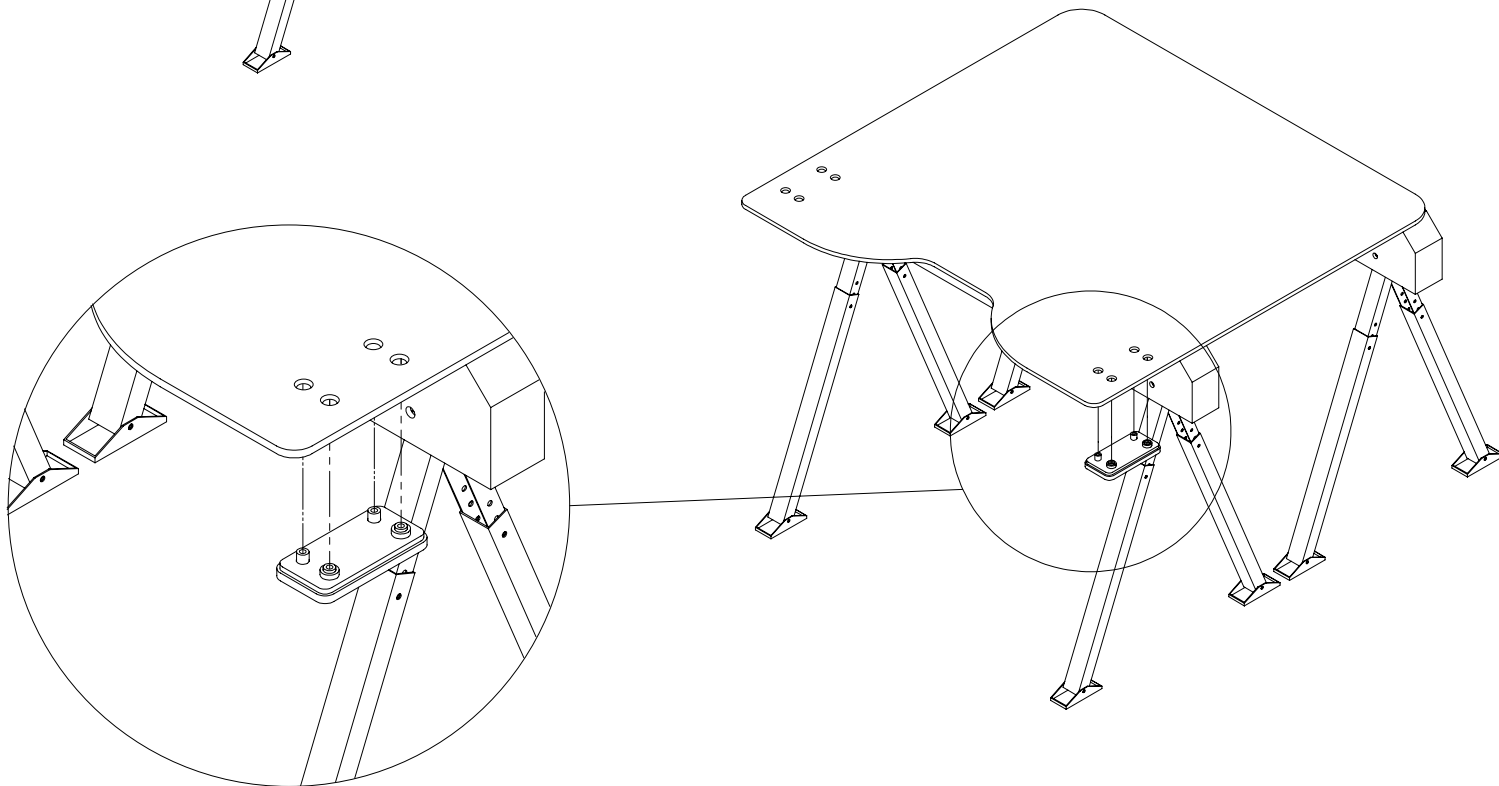
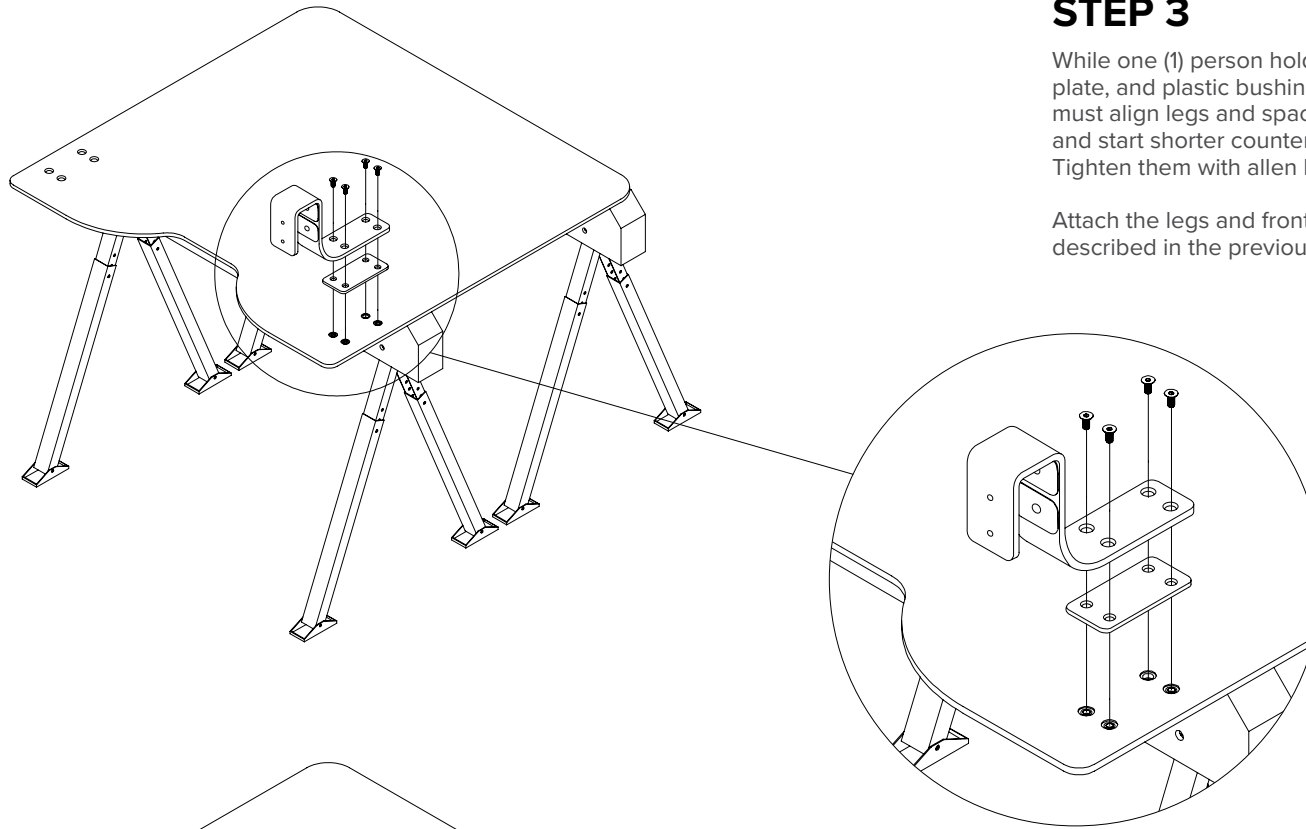


Fig. Q



STEP 3

While one (1) person holds previously aligned spacer plate, front plate, and plastic bushings to glass from bottom, the other person must align legs and spacer plate with holes on glass from top and start shorter countersunk screws by hand into four (4) holes. Tighten them with allen keys provided (**Fig. Q**).

Attach the legs and front plate on other side of the glass as described in the previous steps (**Fig. R**).

Fig. R

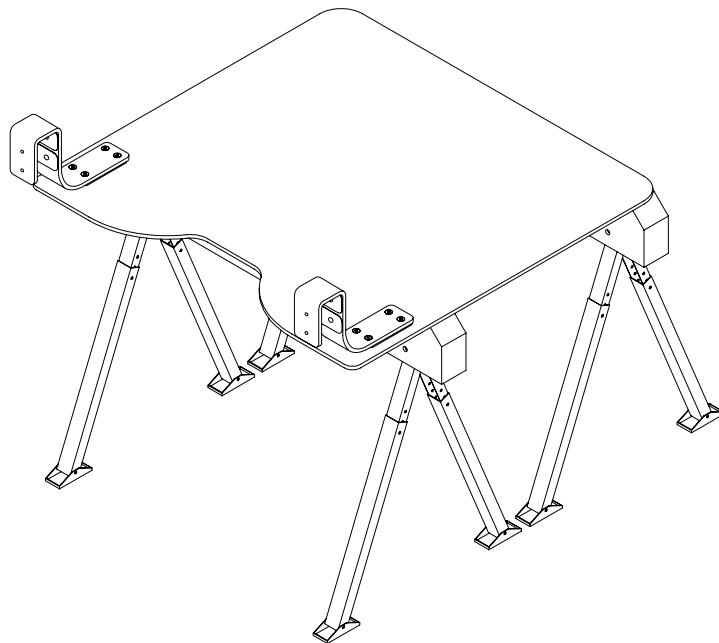
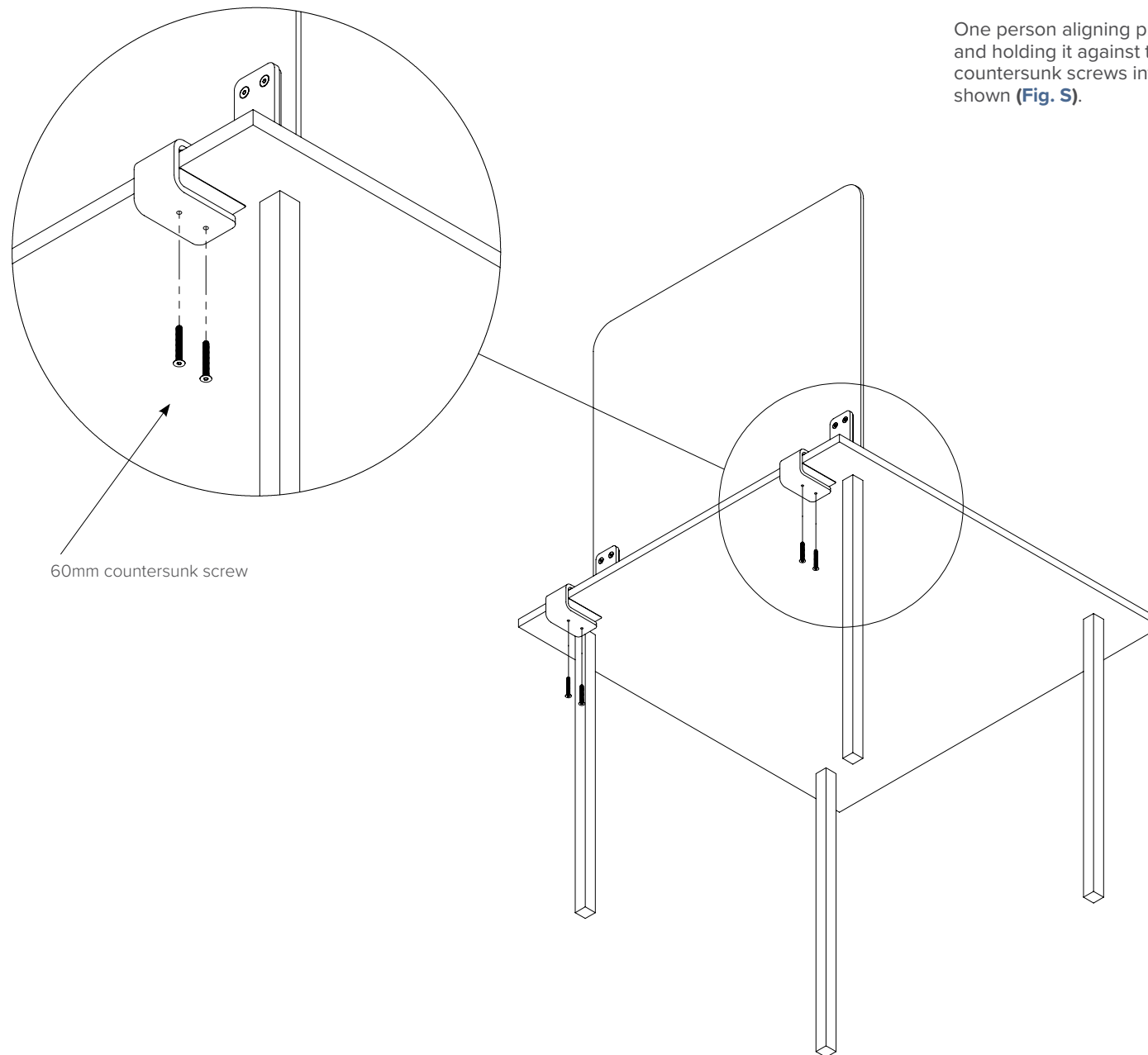


Fig. S



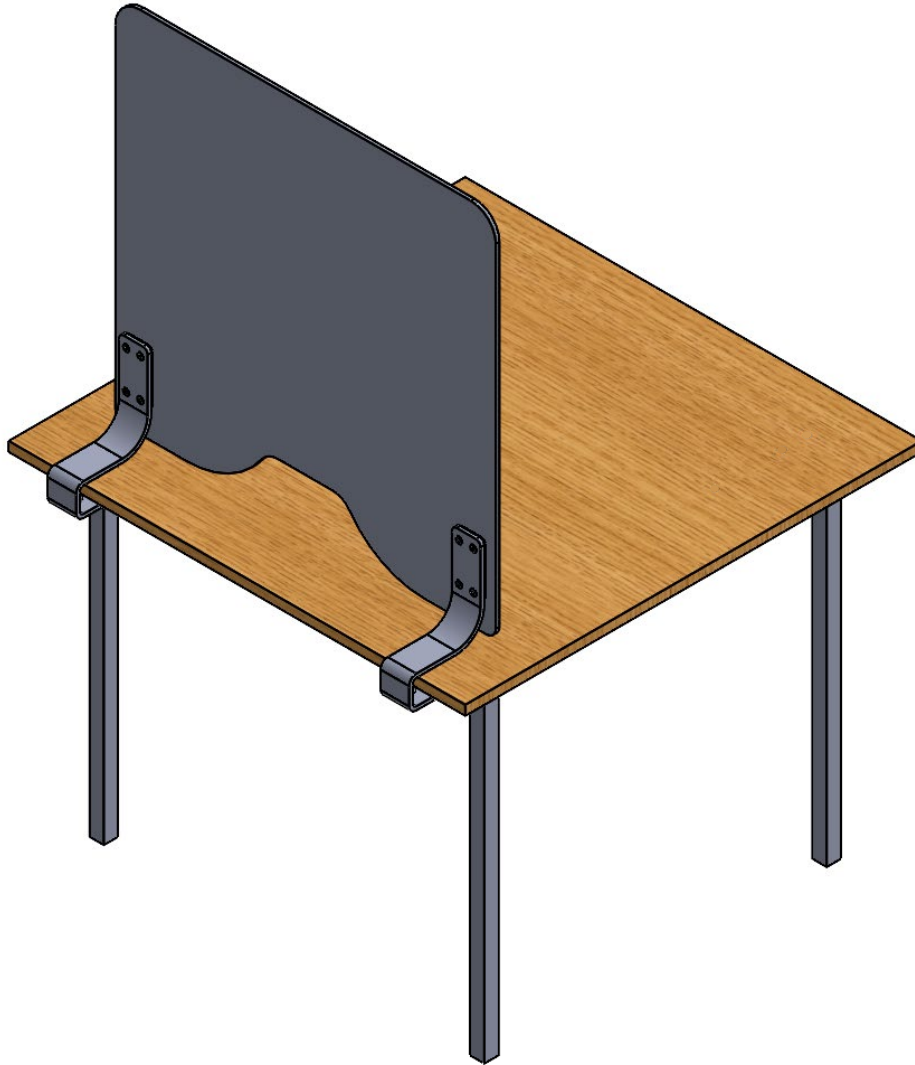
STEP 4

Place glass assembly with legs on table where you want to install it.

One person aligning pressure plate with holes on legs and holding it against the table, other person insert 60mm countersunk screws into holes and tighten them by allen key as shown (**Fig. S**).

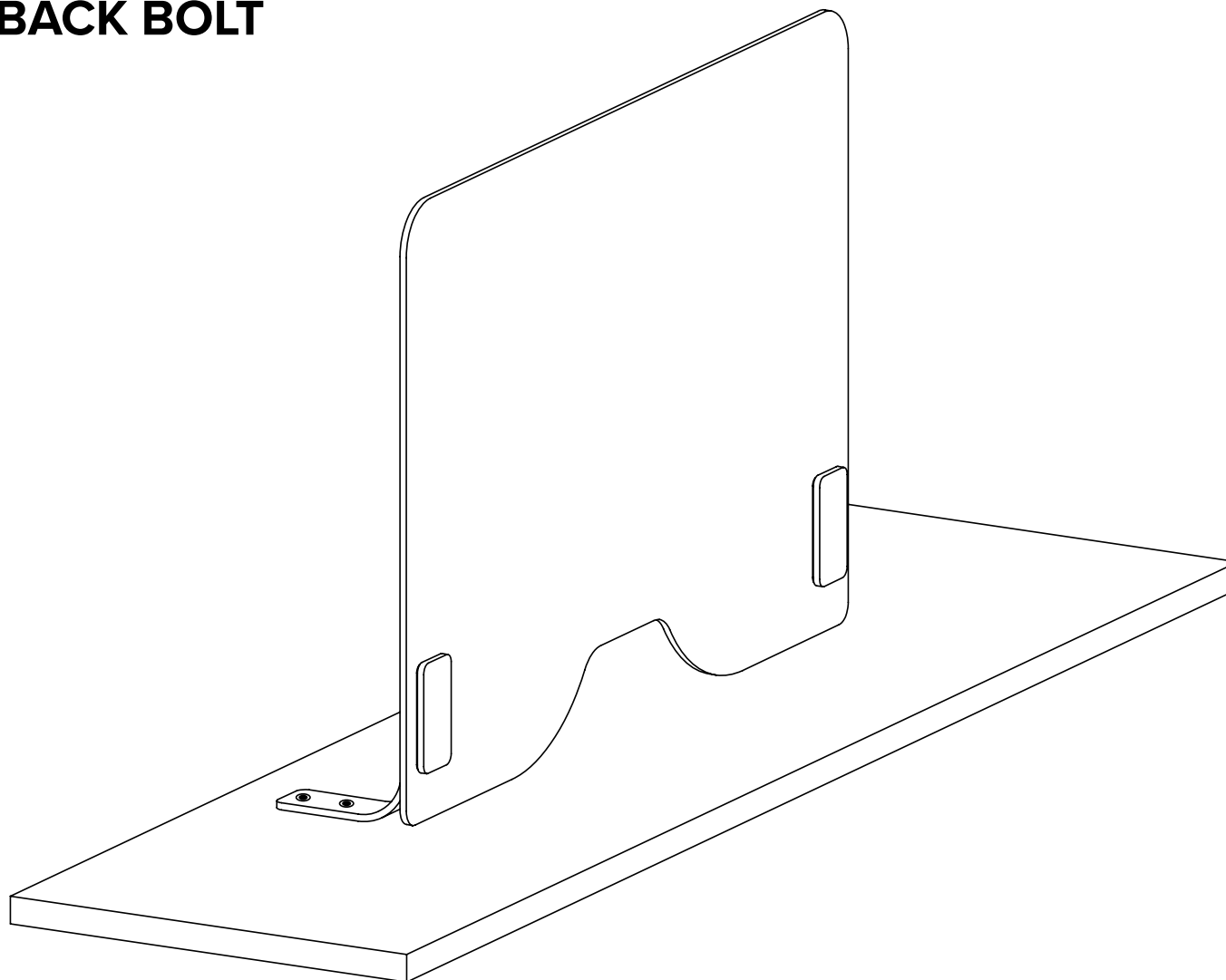
STEP 5

Your be! Shield is now assembled and ready!



BE! SHIELD™

LEG VARIATION: BACK BOLT



INCLUDED HARDWARE

The packaging of one back bolt be! Shield unit consists of:

- One (1) 3/8" (10mm) thick glass panel
- Two (2) legs with rubber pad bottoms (**Fig. A**)
- Four (4) spacer plates (**Fig. B**)
- Two (2) front plates (**Fig. C**)
- Four (4) Flat washers (**Fig. D**)
- Four (4) Lock washers (**Fig. E**)
- Eight (8) 12mm set screws (**Fig. F**)
- Eight (8) plastic bushings (**Fig. G**)
- Two (2) allen keys (**Fig. H**)
- Eight (8) 18mm countersunk screws (**Fig. I**)
- Four (4) 60mm countersunk screws (**Fig. J**)
- Four (4) hex nuts (**Fig. K**)
- Eight (8) threaded inserts (**Fig. L**)
- Four (4) 1/16" (1.5mm) plastic shims (**Fig. M**)*

**For 1/4" (6mm) glass orders only*

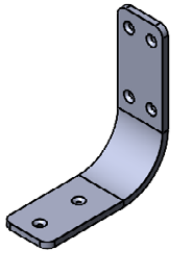


Fig. A

Leg with rubber pads at bottom QTY: 2



Fig. B

Spacer plate QTY: 4



Fig. C

Front plate QTY: 2



Fig. D

Flat washer QTY: 4



Fig. E

Lock washer QTY: 4



Fig. F

12mm Set screw QTY: 8



Fig. G

Plastic bushing QTY: 8



Fig. H

Allen key QTY: 2



Fig. I

18mm Countersunk screw QTY: 8



Fig. J

60mm Countersunk screw QTY: 4



Fig. K

Hex nuts QTY: 4



Fig. L

Threaded insert QTY: 8

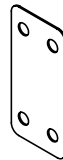
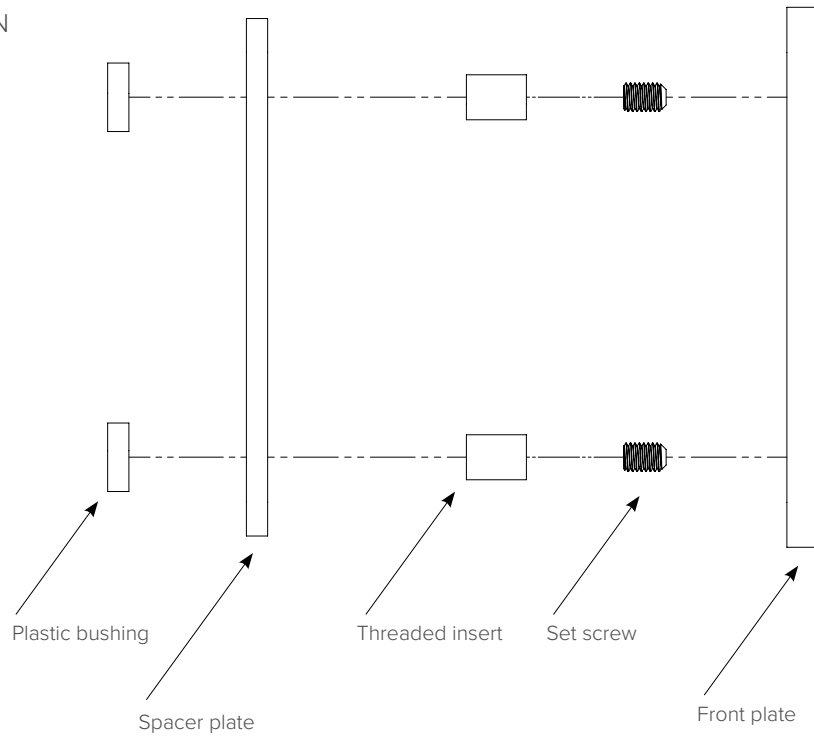


Fig. M

1/16" (1.5mm) plastic shim QTY: 4

Fig. N



STEP 1

Attach set screws, threaded insert, plastic shim plate, and plastic bushing to each front plate.

Place the front plate on any flat surface, drive four (4) set screws with four (4) threaded inserts on front plate. Then, by hand, attach inserts to each set screw on front plate (**Fig. N**).

Align plastic shim plate and plastic bushings with threaded inserts and sandwich them together with the front plate and inserts as shown (**Fig. O**).

Repeat same process described above with other front plate.

FOR 1/4" (6MM) GLASS ORDERS ONLY

For 1/4" (6mm) glass installation, insert additional 1/16" (1.5mm) shim between the spacer plate and the plastic bushings as shown below (**Fig. P**). This extra shim will be on both sides of the glass.

Fig. O

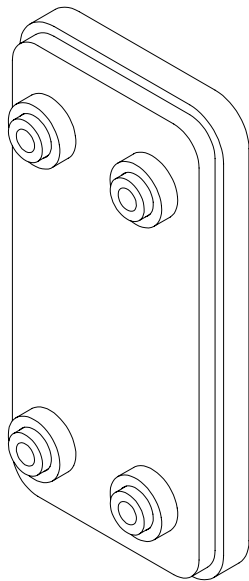


Fig. P

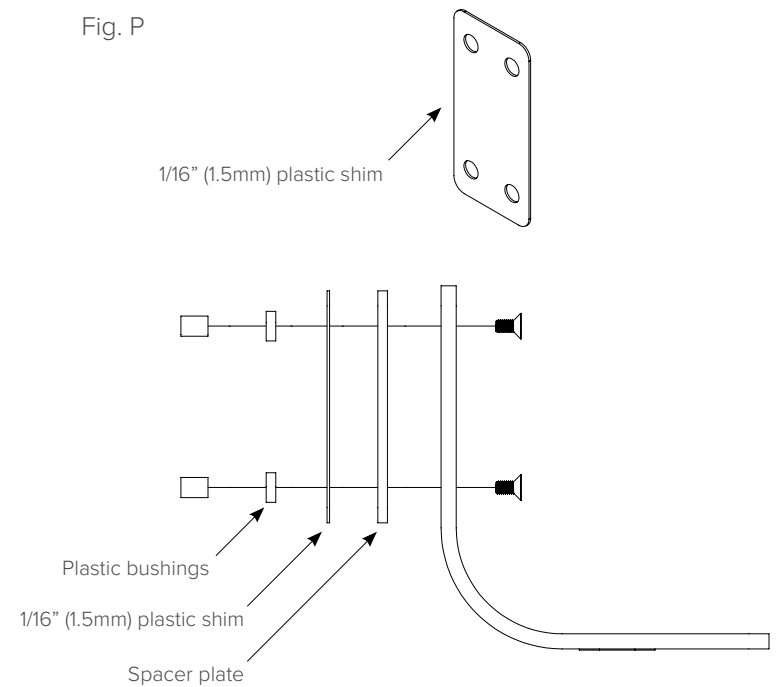
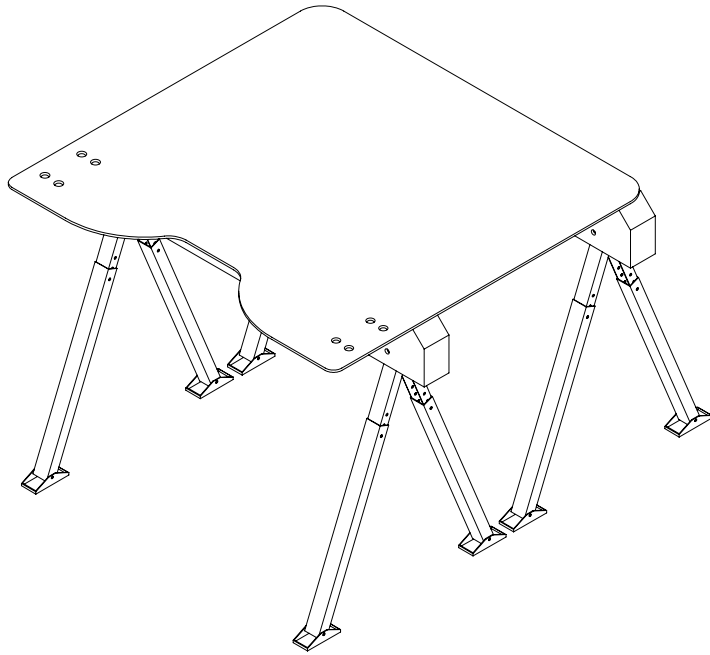


Fig. Q



STEP 2

Place glass on a flat surface. Make sure holes are away from flat surface to give more room to assemble legs as shown (Fig. Q).

Align and hold previously assembled front plate assembly against the glass (Fig. R).

Fig. R

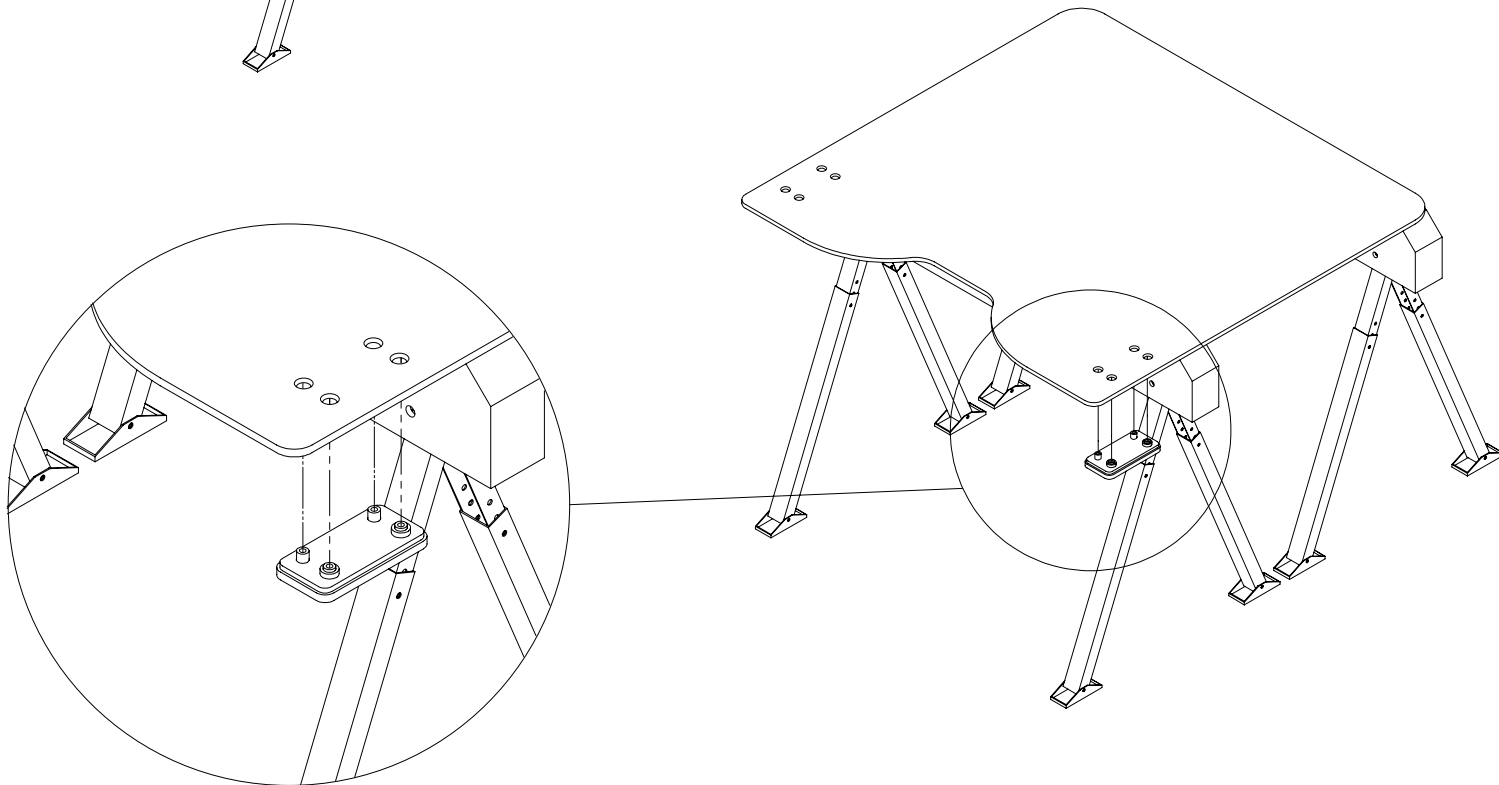
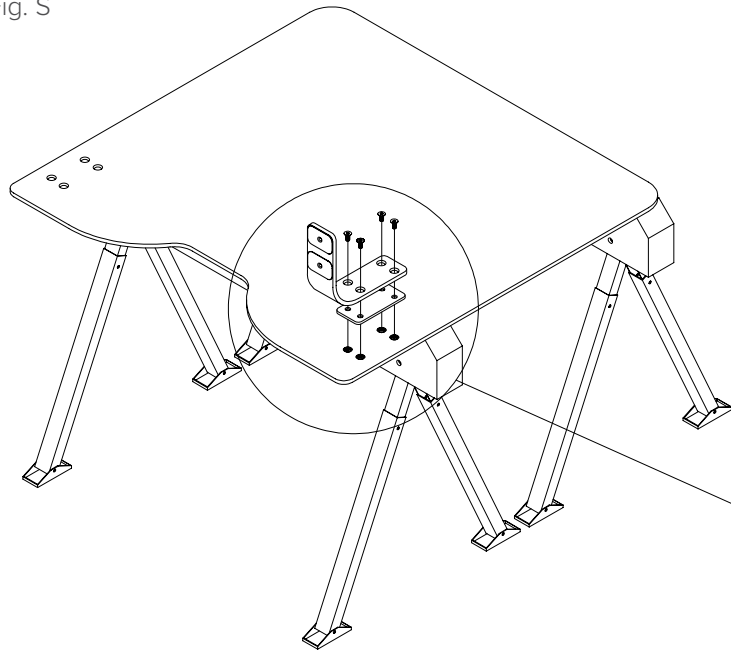


Fig. S



STEP 3

While one (1) person holds previously aligned spacer plate, front plate, and plastic bushings to glass from bottom, the other person must align legs and spacer plate with holes on glass from top and start shorter countersunk screws by hand into four (4) holes. Tighten them with allen keys provided (**Fig. S**).

Attach the legs and front plate on other side of the glass as described in the previous steps (**Fig. T**).

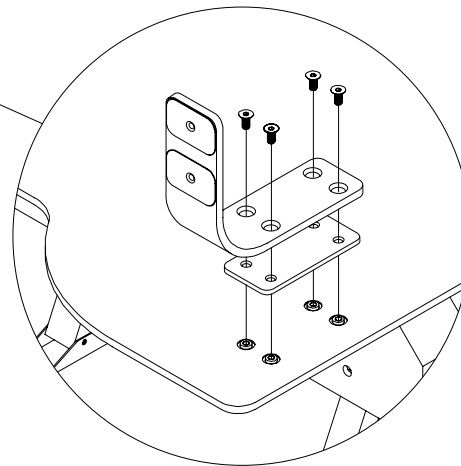


Fig. T

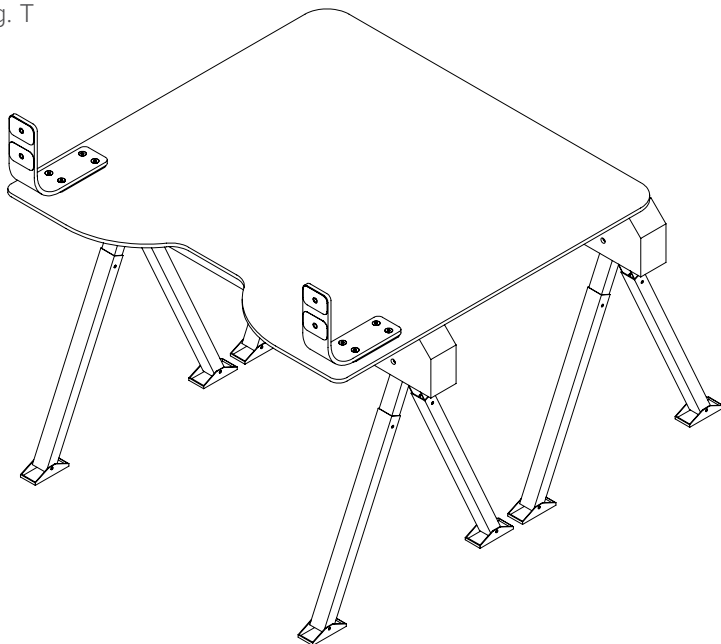
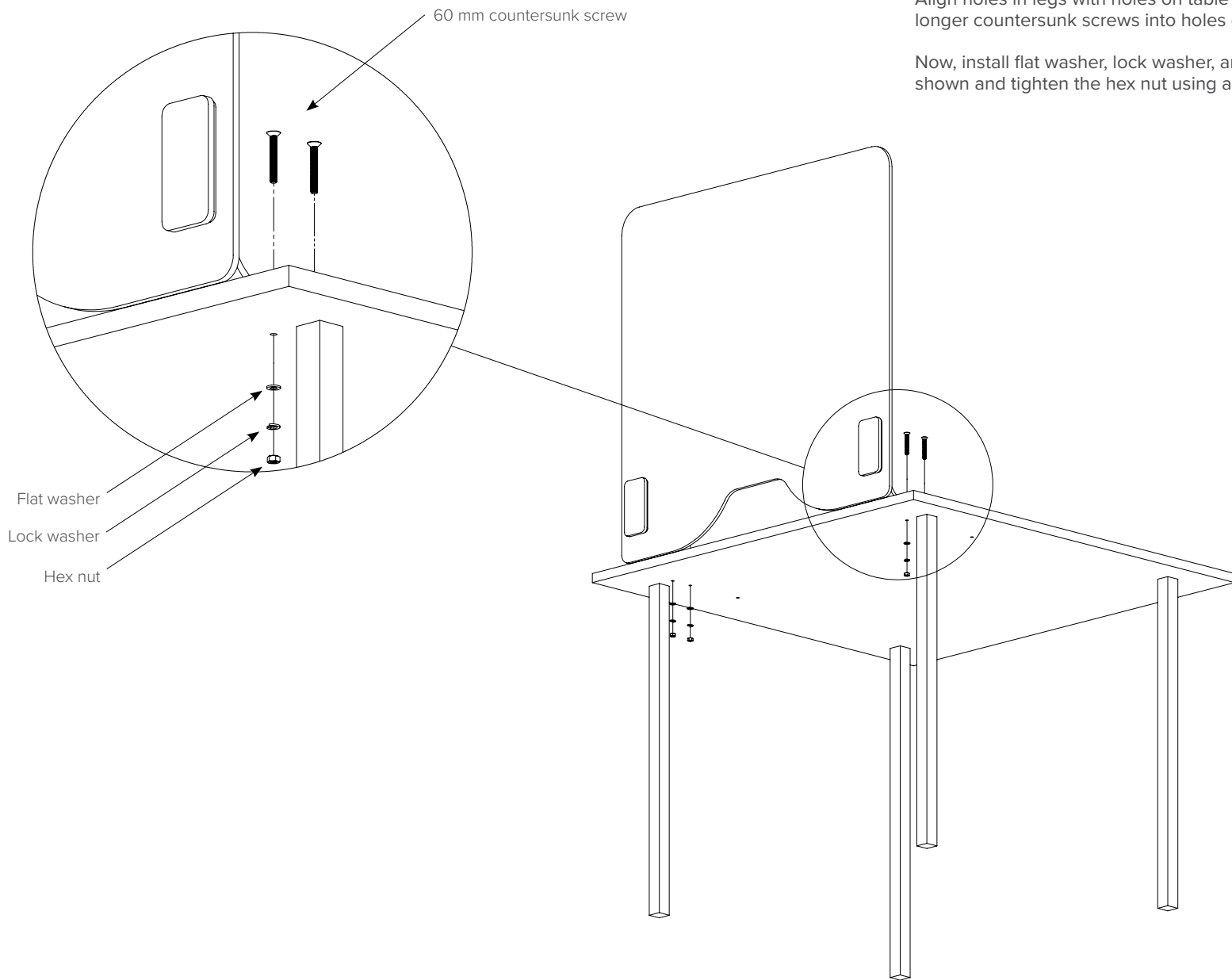


Fig. U



STEP 4

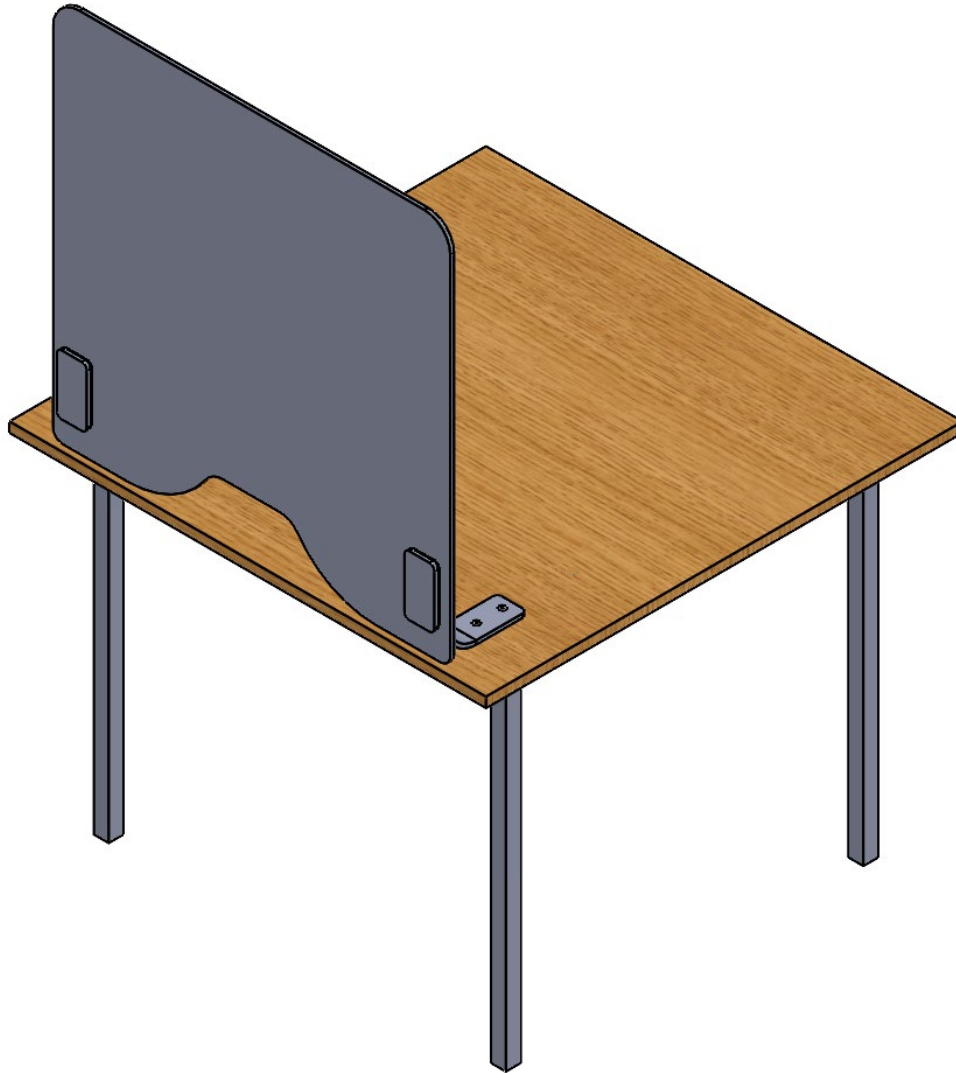
Drill the holes on table where you want to install your be! Shield.

Align holes in legs with holes on table and then insert four (4) longer countersunk screws into holes on legs from top.

Now, install flat washer, lock washer, and nut from bottom as shown and tighten the hex nut using a wrench (**Fig. U**).

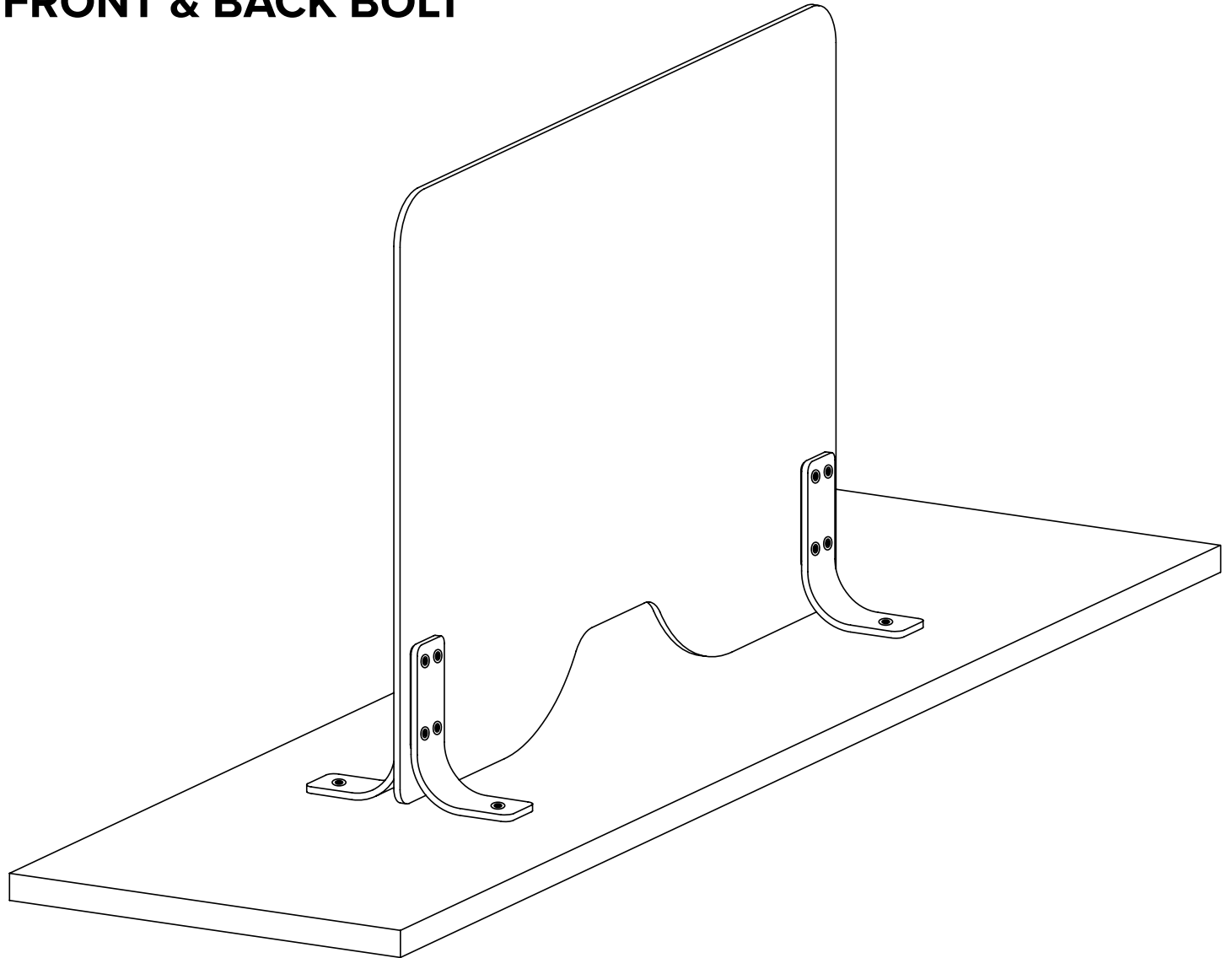
STEP 5

Your be! Shield is now assembled and ready!



BE! SHIELD™

LEG VARIATION: FRONT & BACK BOLT



INCLUDED HARDWARE

The packaging of one front and back bolt
be! Shield unit consists of:

- One (1) 3/8" (10mm) thick glass panel
- Four (4) legs with rubber pad bottoms (**Fig. A**)
- Four (4) spacer plates (**Fig. B**)
- Eight (8) plastic bushings (**Fig. C**)
- Four (4) flat washers (**Fig. D**)
- Four (4) lock washers (**Fig. E**)
- Two (2) allen keys (**Fig. F**)
- Eight (8) threaded inserts (**Fig. G**)
- Sixteen (16) 18mm countersunk screws (**Fig. H**)
- Four (4) 60mm countersunk screws (**Fig. I**)
- Four (4) hex nuts (**Fig. J**)
- Four (4) 1/16" (1.5mm) plastic shims (**Fig. K**)*

**For 1/4" (6mm) glass orders only*

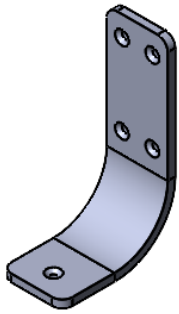


Fig. A

Leg with rubber pads
at bottom QTY: 4



Fig. B

Spacer plate QTY: 4



Fig. C

Plastic bushing QTY: 8



Fig. D

Flat washer QTY: 4



Fig. E

Lock washer QTY: 4



Fig. F

Allen key QTY: 2



Fig. G

Threaded insert QTY: 8



Fig. H

18mm Countersunk
screw QTY: 16



Fig. I

60mm Countersunk
screw QTY: 4



Fig. J

Hex nuts QTY: 4

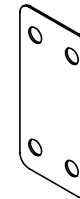
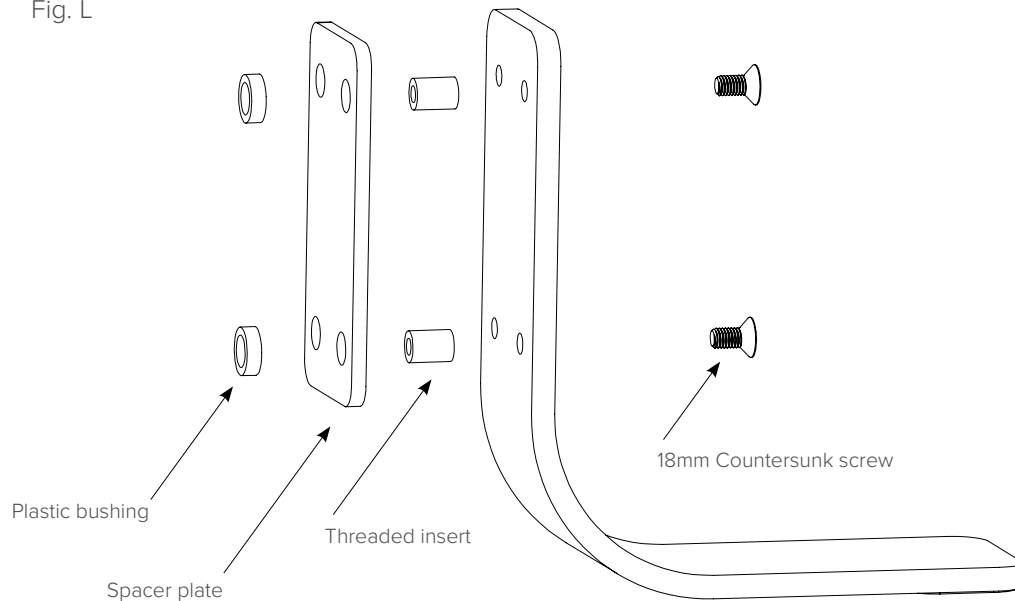


Fig. K

1/16" (1.5mm) plastic shim
QTY: 4

Fig. L



STEP 1

Attach the flat head screws, threaded inserts, plastic shim plate, and plastic bushing to each leg with rubber pad.

Align two (2) screws with left two (2) counter-sunk holes on leg and then, by hand, attach two (2) threaded inserts from other side of leg as shown (Fig. L).

Threaded inserts should always be on the left side of leg as shown. Align plastic shim plate and plastic bushings with threaded inserts and sandwich them together with leg and threaded inserts as shown (Fig. M).

Repeat same process described above for all legs.

FOR 1/4" (6MM) GLASS ORDERS ONLY

For 1/4" (6mm) glass installation, insert additional 1/16" (1.5mm) shim between the spacer plate and the plastic bushings as shown below (Fig. N). This extra shim will be on both sides of the glass.

Fig. M

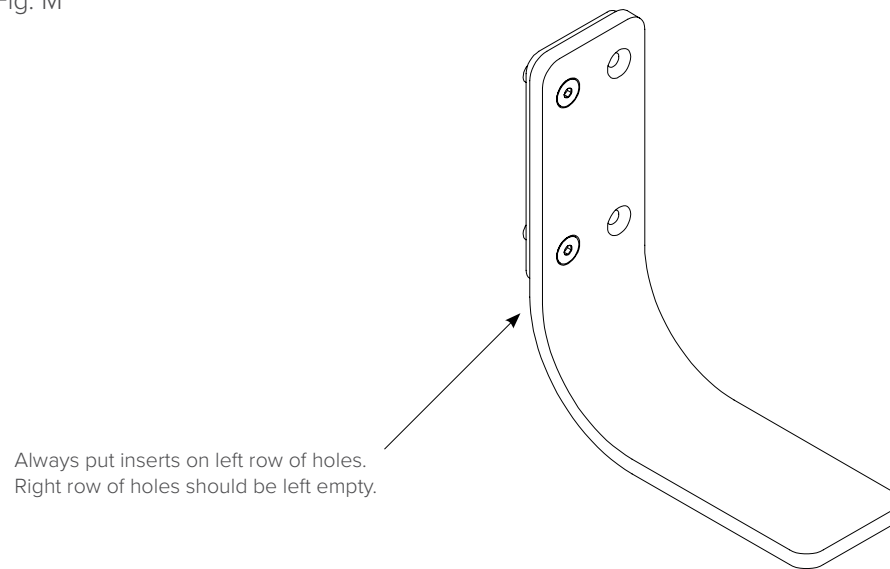


Fig. N

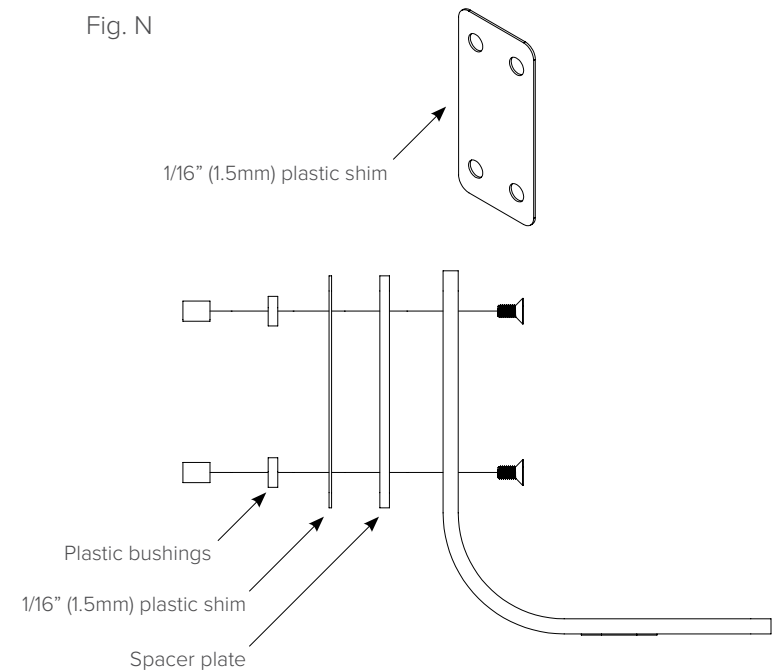
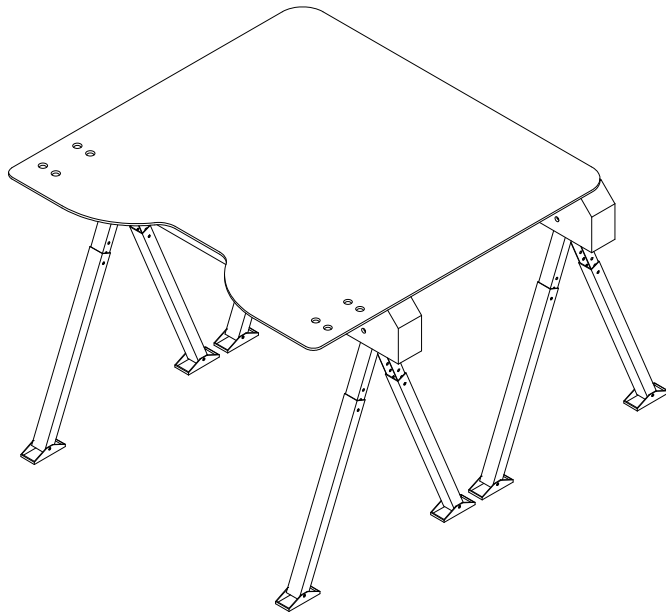


Fig. O



STEP 2

Place glass on a flat surface. Make sure holes are away from flat surface to give more room to assemble legs as shown (Fig. O).

Align leg along with spacer plate and plastic bushings from both the directions of the glass as shown (Fig. P).

Best completed with two (2) people.

Fig. P

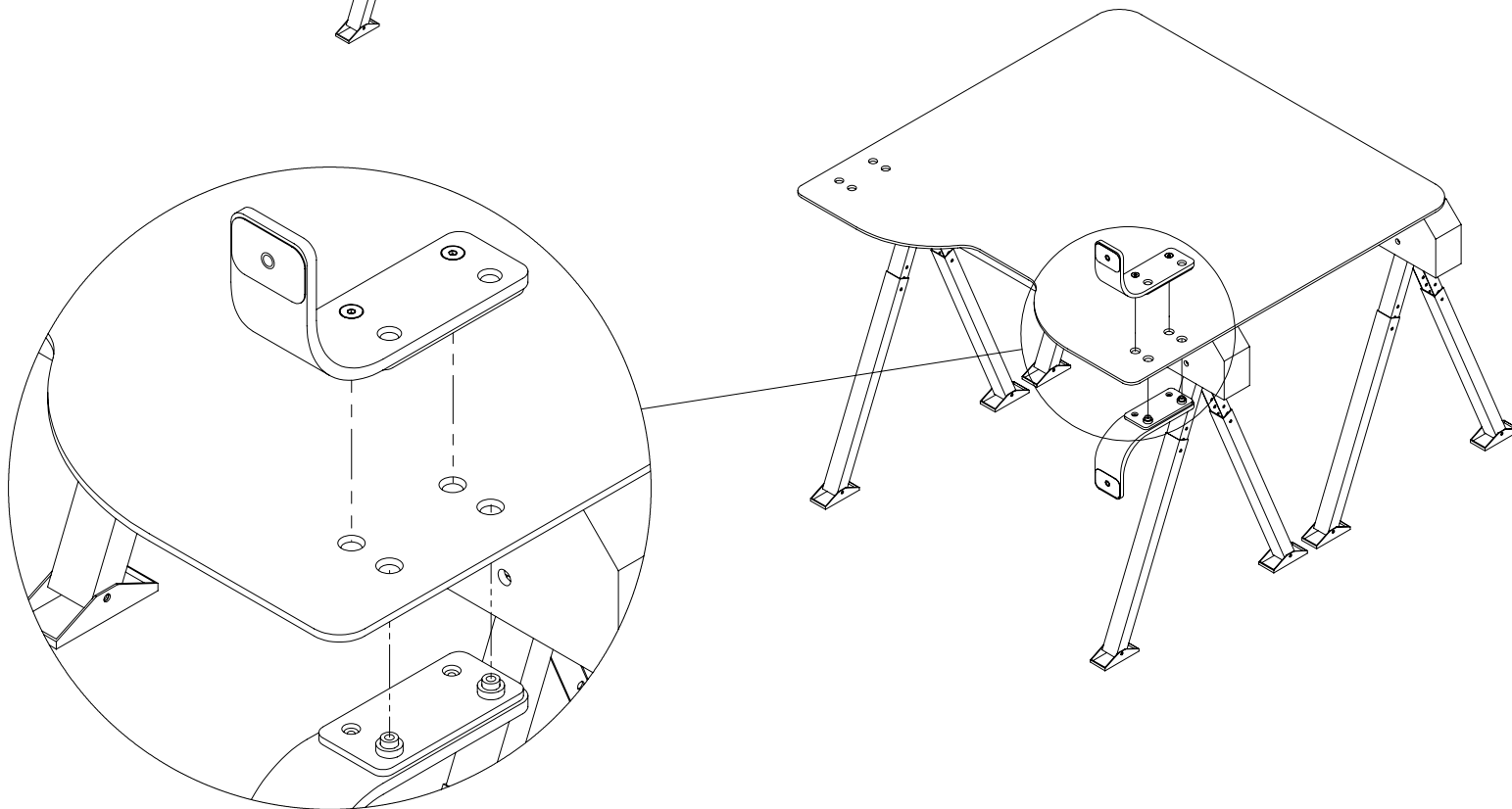
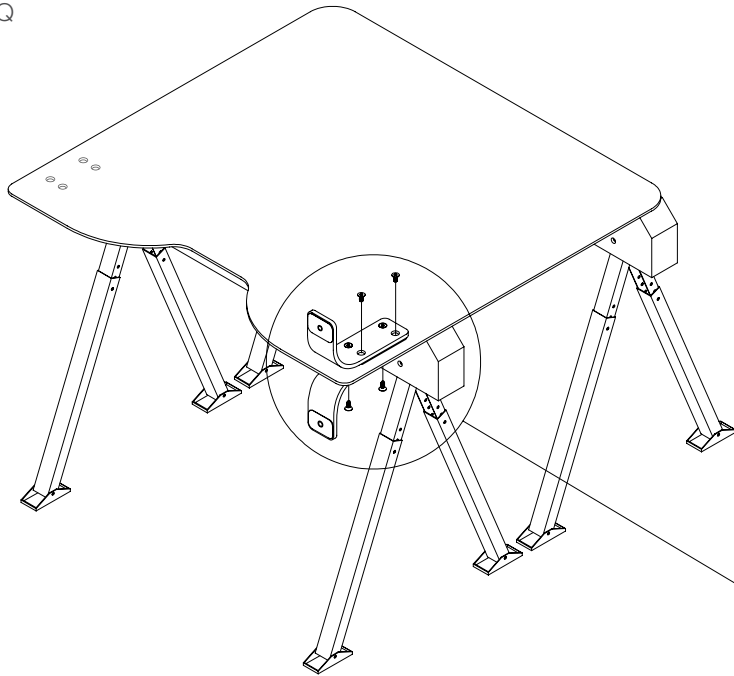


Fig. Q



STEP 3

While one (1) person holds glass and legs together, a second person should start four (4) shorter countersunk screws into empty holes of legs by hand and tighten them with allen keys provided (**Fig. Q**).

Attach legs on other side of glass as described in the previous steps (**Fig. R**).

Fig. R

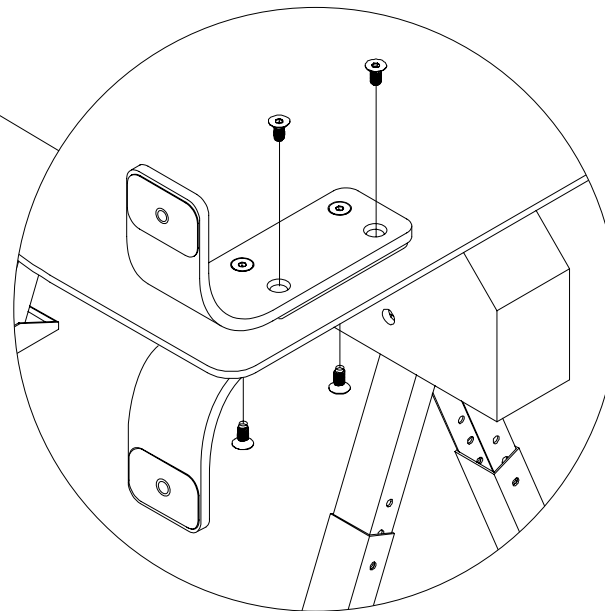
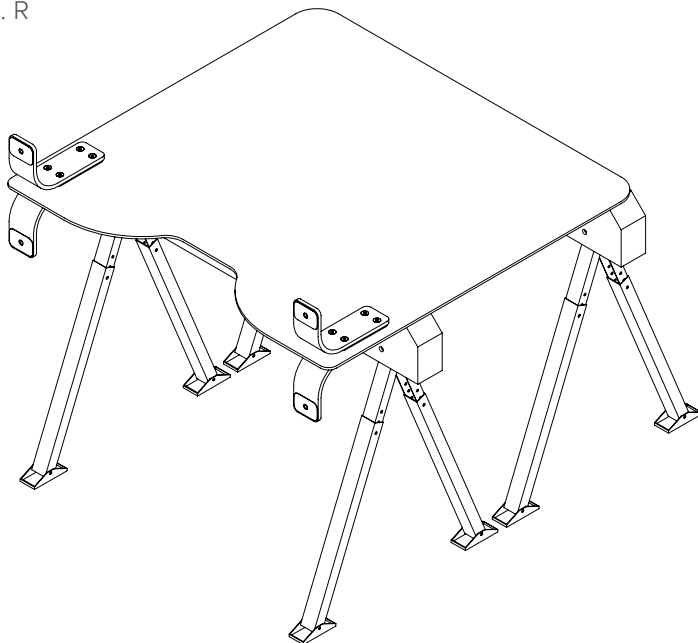
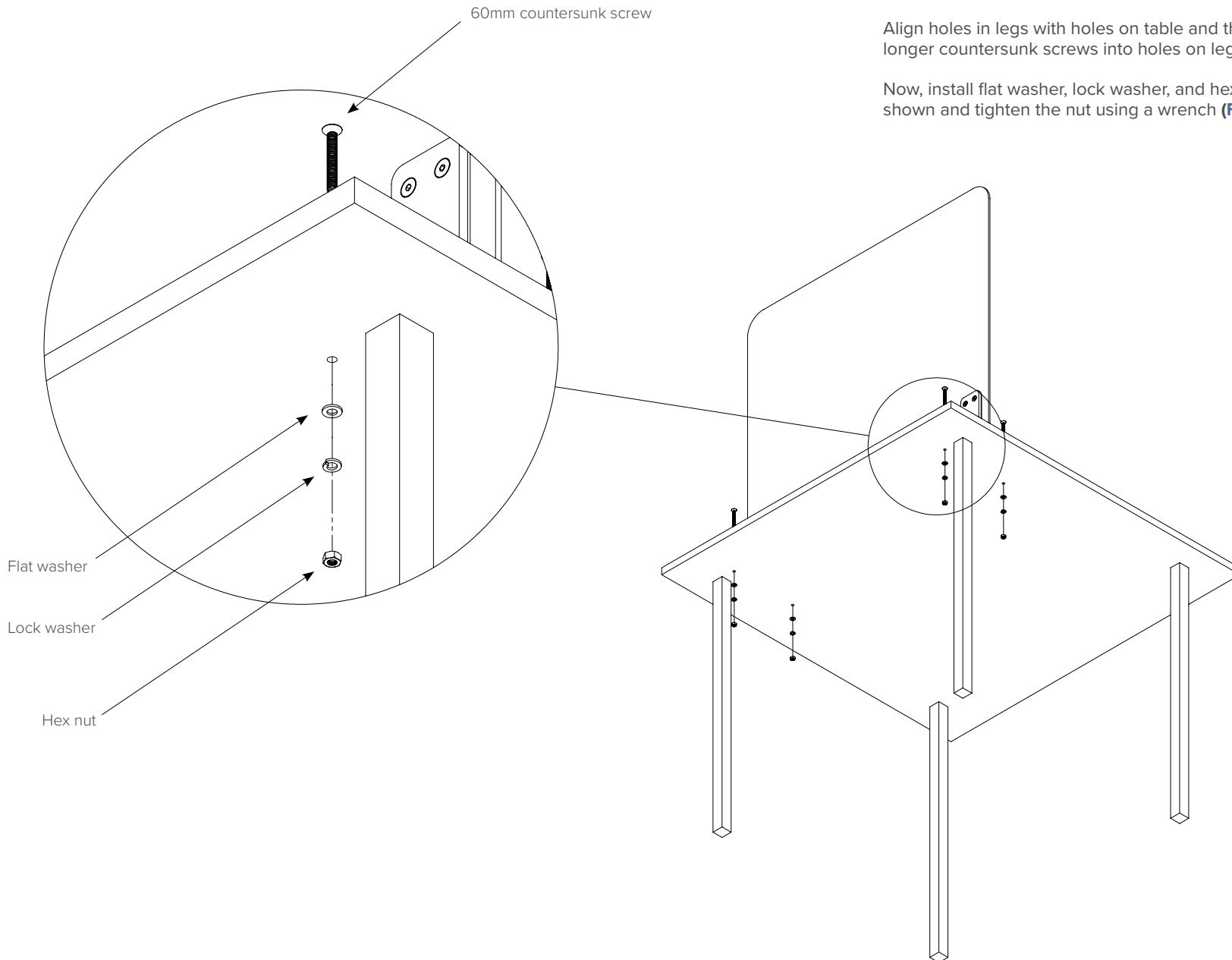


Fig. S



STEP 4

Drill the holes on table where you want to install your be! Shield.

Align holes in legs with holes on table and then insert four (4) longer countersunk screws into holes on legs from top.

Now, install flat washer, lock washer, and hex nut from bottom as shown and tighten the nut using a wrench (**Fig. S**).

STEP 5

Your be! Shield is now assembled and ready!

