



PRICING GUIDE 2020

USD

clarus⁷

TABLE OF CONTENTS

03

WALL-MOUNTED

- 03 Float™
- 03 Depth
- 04 Float™ Transition
- 05 Wall2Wall

06

MOBILE

- 06 be! Mobile
- 06 TherMobile
- 07 Flex™ Mobile
- 07 Flex™ Wall
- 08 go! Mobile™

09

WORKSTATION

- 09 Adapt
- 09 Divide
- 09 Tops

10

MOVING PANELS

- 10 Glide™
- 10 Flip

11

PROJECTION GLASS

- 11 View™

12

ACCESSORIES

- 12 Magnets
- 13 Trays
- 14 Markers

15

CUSTOMIZATION DESCRIPTIONS

- 15 Colors by Clarus™
- 15 ColorDrop™
- 15 Frame Finishes
- 15 Glass Options
- 15 Acoustic Panels
- 15 Caster Colors

16

CUSTOMIZATION PRICING

- 16 Product Customizations
- 17 Custom Fabrication/Production
- 17 Service List

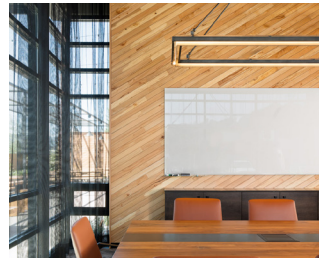
WALL-MOUNTED

FLOAT™

	NON-MAGNETIC	MAGNETIC
Size	List Price	List Price
2' x 3'	\$679	\$849
3' x 4'	\$1,019	\$1,349
4' x 4'	\$1,159	\$1,599
4' x 5'	\$1,299	\$1,849
4' x 6'	\$1,529	\$2,199
4' x 8'	\$1,809	\$2,699
4' x 10'	\$2,239	\$3,349

DESIGN SPECS

- 1/4" tempered, low-iron, writing glass
- Non-staining writing surface
- Compatible with any marker, even permanent
- Clarus Opti-Clear finish and eased corners for safety
- Patent-pending TruMount™ mounting hardware
- Standard Colors by Clarus™ library
- Available in both magnetic or non-magnetic finish



DEPTH

	NON-MAGNETIC	MAGNETIC
Size	List Price	List Price
2' x 3'	\$679	\$849
3' x 4'	\$1,019	\$1,349
4' x 4'	\$1,159	\$1,599
4' x 5'	\$1,299	\$1,849
4' x 6'	\$1,529	\$2,199
4' x 8'	\$1,809	\$2,699
4' x 10'	\$2,239	\$3,349

DESIGN SPECS

- 1/4" tempered, low-iron, writing glass
- Non-staining writing surface
- Compatible with any marker, even permanent
- Clarus Opti-Clear finish and eased corners for safety
- Stainless steel stand-offs sit 1" off the wall
- Standard Colors by Clarus™ library
- Available in both magnetic or non-magnetic finish



FLOAT™ TRANSITION

Size	List Price
8.5" x 11"	\$349
11" x 17"	\$499
12" x 18"	\$549
14" x 22"	\$699
14" x 36"	\$849
18" x 24"	\$899
20" x 30"	\$999
22" x 28"	\$999
24" x 36"	\$1,299
27" x 40"	\$1,499
30" x 40"	\$1,599
36" x 48"	\$1,999
A1	\$1,199
A2	\$799
A3	\$499
A4	\$349
B1	\$1,499
B2	\$999
B3	\$649
B4	\$399

DESIGN SPECS

- 1/4" tempered, low-iron, writing glass
- Non-staining writing surface
- Compatible with any marker, even permanent
- Clarus Opti-Clear finish and eased corners for safety
- Standard Colors by Clarus™ library
- No visible mounting hardware
- Snap-in mounting stand-offs
- Patent-pending pressure inserts to keep graphic tight and flat against glass
- Glass face sits 1" off the wall
- Can be mounted to solid doors



WALL2WALL

Size	List Price
NON-MAGNETIC PER SQFT	\$64
MAGNETIC PER SQFT	\$74

DESIGN SPECS

- 1/4" tempered, low-iron, writing glass
- Non-staining writing surface
- Compatible with any marker, even permanent
- Clarus Opti-Clear finish and eased corners for safety
- Direct adhere to the wall
- Standard Colors by Clarus™ library
- Available in both magnetic or non-magnetic finish



MOBILE

BE! MOBILE

Size	List Price
40" x 73"	\$2,220

DESIGN SPECS

- 5/32" tempered, low-iron, writing glass
- Non-staining writing surface
- Compatible with any marker, even permanent
- Clarus Opti-Clear finish and eased corners for safety
- CBC-100 Pure White
- Elegant, large radius corners
- Magnetic



THERMOBILE

Size	List Price
40" x 70 1/16"	\$1,999
40" x 70 1/16" <i>(No Cutout)</i>	\$1,899

DESIGN SPECS

- 1/2" tempered, low-iron, writing glass
- Non-staining writing surface
- Compatible with any marker, even permanent
- Clarus Opti-Clear finish and eased corners for safety
- Frameless glass
- Elegant, large radius corners



FLEX™ MOBILE

Size	List Price
M 40" x 78"	\$4,900
XL 60" x 78"	\$5,900

DESIGN SPECS

- 5/32" tempered, low-iron, writing glass
- Non-staining writing surface
- Compatible with any marker, even permanent
- Clarus Opti-Clear finish and eased corners for safety
- Constructed from premium powder-coated steel
- 13 standard color frame options
- Standard Colors by Clarus™ library
- Four standard caster color options
- Magnetic



FLEX™ WALL

Size	List Price
M 40" x 78"	\$6,900
XL 60" x 78"	\$7,900

DESIGN SPECS

- 5/32" tempered, low-iron, writing glass
- Non-staining writing surface
- Compatible with any marker, even permanent
- Clarus Opti-Clear finish and eased corners for safety
- Constructed from premium powder-coated steel
- 13 standard color frame options
- Standard Colors by Clarus™ library
- Magnetic
- ADA compliant



GO! MOBILE™

Size	List Price
M 40" x 73"	\$3,996
XL 60" x 73"	\$4,440

DESIGN SPECS

- 5/32" tempered, low-iron, writing glass
- Non-staining writing surface
- Compatible with any marker, even permanent
- Clarus Opti-Clear finish and eased corners for safety
- Constructed from premium powder-coated steel
- 16 standard color frame options*
- Standard Colors by Clarus™ library
- Four standard caster color options
- Magnetic

**XL go! Mobile only available in 13 frame color options*



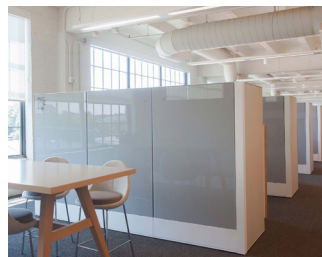
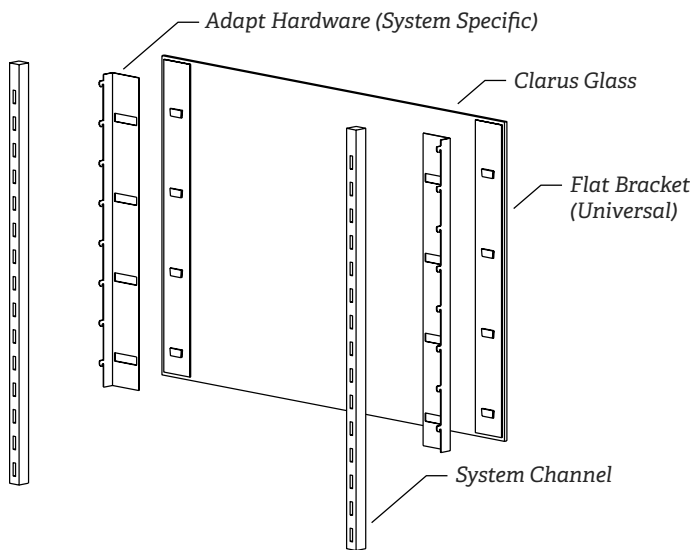
WORKSTATION

The glassboard has come off the walls and entered into workstations in need of fresh collaboration tools. The high design of Clarus furniture glass adds unmatched functionality and inspiration to any space. All Clarus workstation glass products are retrofitted for your existing workstation furniture. Because of this customization, we prefer to create a custom quote, rather than offering standard configurations. To generate custom quotes, please contact your Clarus sales representative.

ADAPT

DESIGN SPECS

- 1/4" tempered, low-iron, writing glass
- Non-staining writing surface
- Compatible with any marker, even permanent
- Clarus Opti-Clear finish and eased corners for safety
- All mounting hardware included
- Standard Colors by Clarus™ library
- Available in both magnetic or non-magnetic finish
- Compatible with most systems from the world's leading furniture manufacturers



DIVIDE

DESIGN SPECS

- Various thicknesses of low-iron, writing glass
- Non-staining writing surface
- Compatible with any marker, even permanent
- Clarus Opti-Clear finish and eased corners for safety
- Supplied hardware optional
- Standard Colors by Clarus™ library
- Transparent or opaque
- Available in both magnetic or non-magnetic finish
- Custom sizing to fit your furniture



TOPS

DESIGN SPECS

- 1/4" or 1/2" tempered, low-iron, writing glass
- Non-staining writing surface
- Compatible with any marker, even permanent
- Clarus Opti-Clear finish and eased corners for safety
- Standard Colors by Clarus™ library
- Custom sizing to fit your furniture



MOVING PANELS

GLIDE™

Every Glide system that Clarus manufactures is custom-made for its environment. Because of the unlimited configuration possibilities, we prefer to create a custom quote, rather than offering standard configurations. To generate custom quotes, please contact your Clarus sales representative.

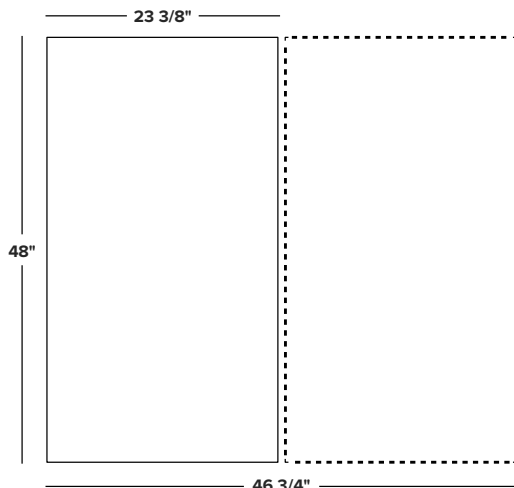
DESIGN SPECS

- 1/4" tempered, low-iron, writing glass
- Non-staining writing surface
- Compatible with any marker, even permanent
- Clarus Opti-Clear finish and eased corners for safety
- Standard Colors by Clarus™ library
- Magnetic
- Keep Your Fingers technology — bumpers prevent sliding panels from touching



FLIP

Size	List Price
23 3/8" x 48" <i>(Total width of footprint = 46 3/4")</i>	\$1,884



DESIGN SPECS

- 5/32" tempered, low-iron, writing glass
- Non-staining writing surface
- Compatible with any marker, even permanent
- Clarus Opti-Clear finish and eased corners for safety
- Constructed from premium powder-coated aluminum
- 13 standard color frame options
- Standard Colors by Clarus™ library
- Acoustic panels for one side of Flip
- Magnetic



PROJECTION GLASS

VIEW™

Size	List Price
80" 40" x 70"	\$4,418
100" 50" x 87"	\$6,418
120" 60" x 104"	\$7,974

DESIGN SPECS

- 1/4" tempered, low-iron, writing glass
- Non-staining writing surface
- Compatible with any marker, even permanent
- Clarus Opti-Clear finish and eased corners for safety
- Customize your View with clear or black anodized aluminum frame
- Available in Clarus View White



ACCESSORIES

MAGNETS

Magnet Type	List Price
HOOK	\$40
LOOP	\$40
SQUARE	\$40

HOOK

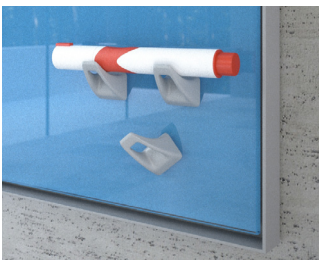
- Available in Soft Gray
- 1" wide by 1.25" tall
- Sold in sets of 3

LOOP

- Available in Soft Gray
- 0.875" wide by 1.25" tall
- Sold in sets of 3

SQUARE

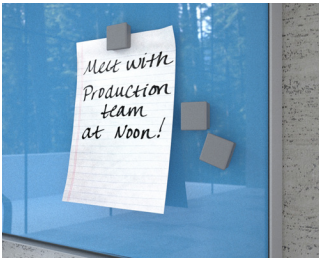
- 11 soft-touch color options
- 1" wide by 1" tall
- Set of 3 comes with all magnetic glassboards



HOOK



LOOP



SQUARE



WHITE



SATIN SILVER



GRAY



GUN METAL



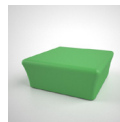
JET BLACK



PERSONABLE
PURPLE



TRUE BLUE



KELLY GREEN



YELLOW SUN



BIG ORANGE



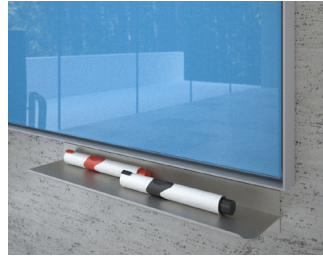
ENERGETIC
RED

TRAYS

Tray Type	List Price
CURVE TRAY	\$65
T-TRAY	\$45
GLASS TRAY	\$160
BOX TRAY	\$85



CURVE TRAY



T-TRAY



GLASS TRAY



BOX TRAY

CURVE TRAY

- Anodized aluminum
- 6.75" tall x 1" deep x 3" wide
- Mounts easily with removable adhesive

T-TRAY

- Anodized aluminum
- 2.75" deep x 12" wide
- Mounts easily with included hardware

GLASS TRAY

- Standard Colors by Clarus™ library
- 2.75" deep x 24" wide
- Mounts easily with included hardware

BOX TRAY

- 11 color options
- 1.75" tall x 2.25" deep x 12" wide
- Attaches easily to magnetic glassboards



WHITE



SATIN SILVER



GRAY



GUN METAL



JET BLACK



PERSONABLE
PURPLE



TRUE BLUE



KELLY GREEN



YELLOW SUN



BIG ORANGE



ENERGETIC
RED

MARKERS

Marker Type	List Price
CLARUS MARKERS	\$27
PILOT PAINT MARKERS	\$40
TEX PAINT MARKERS	\$62
PILOT V-BOARD MARKERS	\$27



CLARUS MARKERS



PILOT PAINT MARKERS



TEX PAINT MARKERS



PILOT V-BOARD MARKERS

CLARUS MARKERS

- Set of 4 colors
- Traditional dry-erase marker
- Low odor

PILOT PAINT MARKERS

- Set of 4 colors
- Paint marker
- Great for darker color glassboards

TEX PAINT MARKERS

- Set of 12 fluorescent colors
- Dry-erase
- Great for darker color glassboards

PILOT V-BOARD MARKERS

- Set of 5 colors
- Erase dry or wet-erase
- Made from 91% recycled content

CUSTOMIZATIONS



COLORS BY CLARUS™

Customize your glass with any color. Visit clarus.com/CBC to see the entire Colors by Clarus collection.



STANDARD CBC LIBRARY

COLORDROP™

ColorDrop print technology — a high resolution, proprietary printing system exclusively by Clarus.

FRAME FINISH OPTIONS

Outfit your Surround, go! Mobile, Flex Mobile, Flex Wall or Flip with one of the 16 available finish options.



*BRUSHED ALUMINUM ONLY AVAILABLE FOR SIDE INSERT PANEL FOR FLEX MOBILE & FLEX WALL
 **TIMBER FINISHES ONLY AVAILABLE FOR SURROUND & GO! MOBILE

GLASS OPTIONS

Low-Iron Glass

- Gloss-finish glass that has a low-iron content, which is crucial for color accuracy as glass has a natural greenish tint to it.
- Matte-finish glass that diffuses light — ideal for environments with large amounts of natural light.

ACOUSTIC PANEL COLORS

Choose from 14 color options* for your acoustic panel on your Flip, go! Mobile, Flex Mobile, or Flex Wall.



*XL GO! MOBILE, FLEX MOBILE, & FLEX WALL ONLY AVAILABLE IN LIGHT GRAY & MEDIUM GRAY

ACOUSTIC PANEL STYLES

Choose from 5 pattern styles for your acoustic panel on your Flip, go! Mobile, Flex Mobile, or Flex Wall.



CASTER COLORS

Choose from 4 color options for your casters on your go! Mobile or Flex Mobile.



PRODUCT CUSTOMIZATIONS*

		CUSTOM COLOR	MATTE FINISH	METAL SURROUND	TIMBER SURROUND	PET ON MOBILE	LOGO	HIGH RES. GRAPHICS
Product(s)	Size	Per Unit + \$249 Mix Fee	Fee Per Unit	Fee Per Unit	Fee Per Unit	Fee Per Side	Fee Per Logo	Fee Per Unit
FLOAT, DEPTH	2' x 3'	\$9	\$99	\$119	\$249	—	\$199	\$99
FLOAT, DEPTH	3' x 4'	\$29	\$149	\$169	\$349	—	\$199	\$199
FLOAT, DEPTH	4' x 4'	\$29	\$179	\$199	\$399	—	\$199	\$269
FLOAT, DEPTH	4' x 5'	\$39	\$209	\$219	\$449	—	\$199	\$329
FLOAT, DEPTH	4' x 6'	\$49	\$249	\$249	\$499	—	\$199	\$399
FLOAT, DEPTH	4' x 8'	\$69	\$299	\$299	\$599	—	\$199	\$529
FLOAT, DEPTH	4' x 10'	\$79	\$369	\$349	\$699	—	\$199	\$669
GO! MOBILE	M 40" x 73"	\$99	\$449	Standard	\$599	\$299	\$299	\$499
FLEX MOBILE, FLEX WALL	M 40" x 78"	\$99	\$449	Standard	\$599	\$299	\$299	\$499
GO! MOBILE	XL 60" x 73"	\$149	\$499	Standard	—	\$349	\$299	\$749
FLEX MOBILE, FLEX WALL	XL 60" x 78"	\$149	\$499	Standard	—	\$349	\$299	\$749
VIEW	80" 40" x 70"	—	\$499	—	—	—	—	—
VIEW	100" 50" x 87"	—	\$699	—	—	—	—	—
VIEW	120" 60" x 104"	—	\$899	—	—	—	—	—

*NOT SUBJECT TO DISCOUNTS.

CUSTOM FABRICATION/PRODUCTION*

		BUMPED CORNERS	CIRCLE	CUSTOM HOLES	NOTCHES	OUT OF SQUARE
Product(s)	Size	Fee Per Unit	Fee Per Unit	Fee Per Hole	Fee Per Notch	Fee Per Unit
FLOAT, DEPTH	2' x 3'	\$99	\$119	\$149	\$149	\$99
FLOAT, DEPTH	3' x 4'	\$99	\$169	\$149	\$149	\$99
FLOAT, DEPTH	4' x 4'	\$99	\$189	\$149	\$149	\$99
FLOAT, DEPTH	4' x 5'	\$99	\$209	\$149	\$149	\$99
FLOAT, DEPTH	4' x 6'	\$99	\$239	\$149	\$149	\$99
FLOAT, DEPTH	4' x 8'	\$99	\$289	\$149	\$149	\$99
FLOAT, DEPTH	4' x 10'	\$99	\$329	\$149	\$149	\$99

		RADIUS CORNERS	SHAPE	CUSTOM EDGING	TIGHT TOLERANCE
Product(s)	Size	Fee Per Unit	Fee Per Unit	Fee Per Unit	% of Order
FLOAT, DEPTH	2' x 3'	\$119	\$79	\$179	10%
FLOAT, DEPTH	3' x 4'	\$169	\$169	\$249	10%
FLOAT, DEPTH	4' x 4'	\$189	\$219	\$289	10%
FLOAT, DEPTH	4' x 5'	\$209	\$279	\$319	10%
FLOAT, DEPTH	4' x 6'	\$239	\$339	\$359	10%
FLOAT, DEPTH	4' x 8'	\$289	\$449	\$429	10%
FLOAT, DEPTH	4' x 10'	\$329	\$559	\$499	10%

*NOT SUBJECT TO DISCOUNTS.

SERVICE LIST*

Service	Fees/Charges
RUSH MANUFACTURING	\$199 per Order (≤ 5 boards) \$249 per Order (> 5 boards)
RESTOCKING	30% of Order Value
LIFT GATE	\$149 per Order
ART SERVICES	\$99 per Hour/Activity

*NOT SUBJECT TO DISCOUNTS.

Service	Fees/Charges
EXPEDITED SHIPMENT	3-5 Day: \$99 2 Day: \$199 1 Day: \$299
SPECIALTY DELIVERY	\$199 per Order Delivery
SPECIALTY PACKAGING	\$149 per Special Packaging

*NOT SUBJECT TO DISCOUNTS.