



INSPIRING EDUCATION

clarus⁺



Product shown: go! Mobile™

TABLE OF CONTENTS

4	Classrooms & Lecture Halls
10	Collaboration Areas
16	Student Unions
20	Athletics
30	Libraries
34	Designing for the Next Generation
36	Product Specifications

CLASSROOMS & LECTURE HALLS

Collaborative spaces encourage learning outside the classroom, and they're becoming the norm around college campuses. But that doesn't mean the traditional classroom and lecture hall will ever become obsolete.









COLLABORATION AREAS

The fastest growing trend on college campuses is the adoption of collaborative spaces. These are thoughtfully designed spaces for groups of 4-10 people to work together on projects outside the classroom.

Because of the nature of complex collaboration, the spaces themselves must be flexible and relaxed. Students deserve the luxury of stretching their minds and bodies simultaneously, so furniture must be mobile and non-restrictive.



Product shown: go! Mobile™



Product shown: Glide



Product shown: go! Mobile™

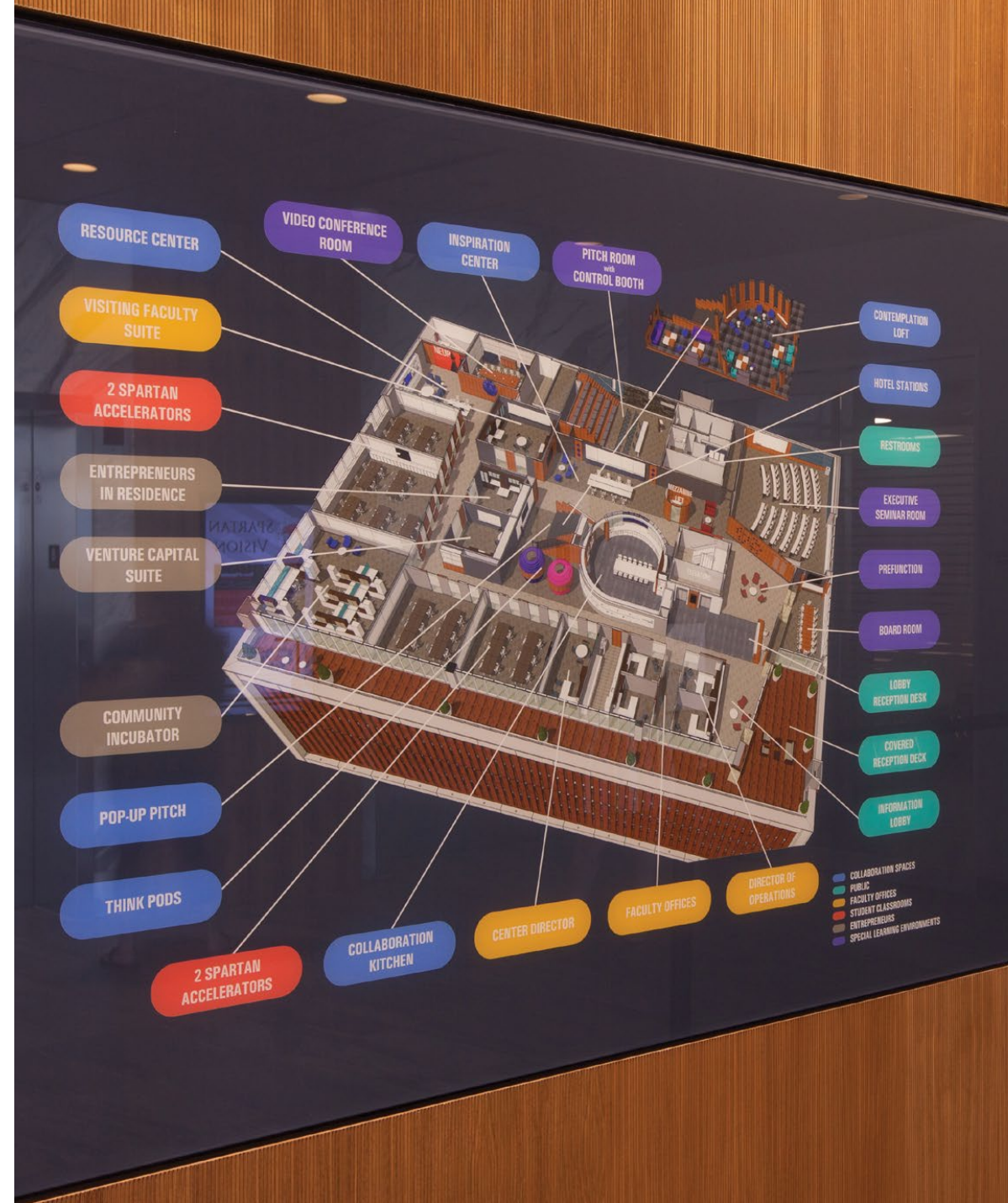


Product shown: Glide™

Collaborative spaces can exist anywhere on campus. In large common areas like the student union, to the nooks and crannies of the library, students are opting to collaborate more, and they don't care where they get their work done. These spaces must inspire learning and accommodate students' communication needs, and glassboards are an excellent way to achieve that goal.

STUDENT UNIONS

Student unions are indisputably the hubs of modern college campuses. Wayfinding, gathering spaces, and mixed-use areas are becoming crucial elements of modern student unions. For this reason, universities are investing in these spaces as the ultimate recruiting and retention centers on campuses. The goal? To create an environment where prospective students can't help but picture themselves.





Product shown: Wall2Wall with ColorDrop™

DR. ALEXANDER L.
1929-2009



DR. CLARK joined The University of Texas at Dallas as its first Vice President for Academic Affairs on September 1, 1974 and held the post for 17 years. He was instrumental in designing the strategy, organization and programs of the University's academic programs and providing UT Dallas' prominence in visionary research.



Product shown: Wall2Wall with ColorDrop™

ATHLETICS

Of all the spaces on college campuses, athletic facilities are often the most exposed to the public eye. Recruiting, branding, and communicating campus culture are the highest priorities of athletic facilities. Clarus®' ColorDrop™ printing technology and ability to color-match any school's brand colors makes our products ideal for any and all athletic facilities.



Product shown: Float™ with ColorDrop™





BASKETBALL



Whether it's a locker room, coach's office, weight room, study nook, or sports film theater, glassboards can elevate and brand a space, creating unique teaching opportunities for coaching staff and athletes.

SMU MUSTANGS



LIBRARIES

Over the last decade, libraries have been transformed from a simple book warehouse into a study haven for students. The combination of personal focus areas with collaborative breakout rooms encourages more students to bring their studies to the library.







DESIGNING FOR THE NEXT GENERATION

Generation Z demands an environment that encourages collaboration and community outside of the classroom. With Clarus, you can foster students' self-directed learning, while staying true to your institution's mission and brand.

By using our glassboards, you can meet all your students' needs:

- Connect students who desire naturally collaborative and flexible work spaces
- Understand the intentionality behind creating products that impact Gen Z
- Prepare your institution for the next generation with intentional design

Want to learn more about Generation Z and how to adapt and conform to meet their needs? Visit [Clarus.com/education](https://clarus.com/education).

Need CEU credits? Our research team has authored a CEU entitled Understanding Generation Z to equip designers to prepare campuses for the next generation of learners.

Email education@clarus.com if you're interested in participating in this CEU.

FLOAT™ + DEPTH

Clarus’ elegant glassboard solutions define educational spaces with a style that adds unmatched functionality to the design. Inspire creativity, collaboration, and communication within any space.

Give your space a clean, minimal look with Float’s concealed mounting hardware, or add dimension and texture with Depth’s stainless-steel standoffs.

SPECS

- 150+ standard colors available
- Custom colors and shapes available on request
- ColorDrop printing available — proprietary print technology, providing full-color and detailed graphics exclusively from Clarus
- Float — TruMount™, multi-directional, concealed mounting hardware provided
- Surround and Timber frame options available for Float boards:
 - Surround — powder-coated aluminum frames available in 13 different colors
 - Timber — frames available in 3 different species of natural wood
- Depth — steel standoffs provided as mounting hardware
- Any size up to 72" x 144"
- Magnetic and non-magnetic options available
- Installs easily into any drywall surface, no reinforced walls required

STANDARD SIZES

4' x 5'	4' x 6'	4' x 8'	4' x 10'
3.5' x 5'			
3' x 4'			
2' x 3'			

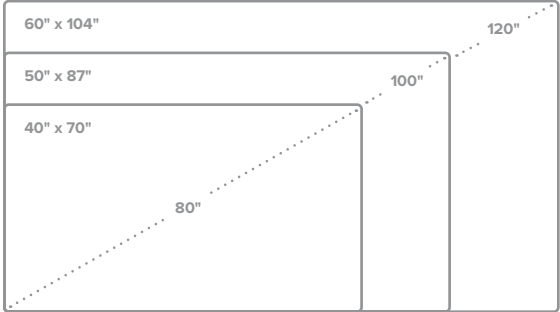
VIEW™

View is an evolutionary step in glassboards. As the first ever glass writing surface that doubles as a high-definition projection surface — View sets the standard for all projection surfaces to come. With its clean lines, clarity of picture, and beautiful, space-saving design, View serves as the ultimate multi-functional projection surface.

SPECS

- Sizes are optimized for a 16:9 viewing area
- Available in low-iron with gloss or matte (Silk) finish
- Mounts flush to the wall, no reinforced walls required
- TruMount multi-directional concealed mounting hardware provided

STANDARD SIZES



SELECTING A PROJECTOR

View was engineered to deliver an excellent projection experience on writable glass, though different rooms present unique projection needs, due to lighting, spacing, and dimensions. For this reason, Clarus recommends consulting an AV professional when considering View as your projection surface and deciding on a projector.

Pairing your View with the correct projector is critical for optimal performance. Traditional, “long” throw and “short” throw projectors can work with View, but can cause a bright spot to appear on the projecting surface in some unique cases. To ensure projection clarity, Clarus suggests using an “ultra-short” throw projector with your View glassboard.

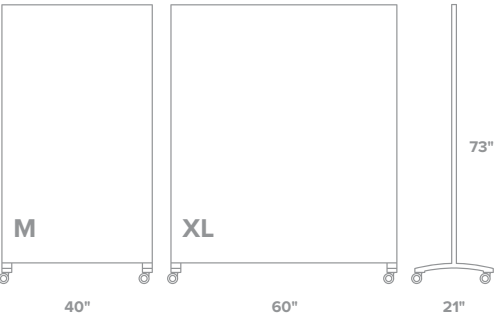
GO! MOBILE™

The Clarus Design Studio created go! Mobile to be the most designer-friendly, collaborative glassboard ever. go! Mobile gives you the freedom to creatively express, collaborate, and inspire in your own space, in your own way. With a sleek, colorful steel frame or a beautiful wooden frame to pair with your unique glassboard, your go! will elevate and brand any space.

SPECS

- Powder-coated steel frames available in 13 different colors
- Timber frames available in 3 different species of natural wood
- Gangs, nests, and collaborates with other go!'s
- 3 and 4-wheeled go! Mobiles available
- go! Hubs available for additional ganging with 3-wheeled go!'s
- Magnetic and non-magnetic options available
- 150+ standard colors available
- Custom colors available on request
- ColorDrop printing available — proprietary print technology, providing full-color and detailed graphics exclusively from Clarus

SIZES*



**3 wheel go! Mobiles only available in medium size.*

GLIDE™

Glide is a fully integrated, sliding glassboard system with concealed hardware, designed to allow sliding glass panels to smoothly move across the face of fixed, wall-mounted panels. Glide's three-dimensional system maximizes existing wall space, providing hundreds of square feet of glass writing surface in one compact design.

SPECS

- 1/4" Clarus tempered safety writing glass
- Available in low-iron with gloss or matte (Silk) finish
- Non-staining writing surface
- Compatible with any marker, even permanent
- Clarus Opti-Clear finish and eased corners for safety
- Available in magnetic finish
- 150+ standard colors available
- Custom colors available on request
- ColorDrop printing available — proprietary print technology, providing full-color and detailed graphics exclusively from Clarus

SIZES

- Glide's height and width are dependent on one another — a change in one value will affect the other value

HORIZONTAL ORIENTATION

- Any width, from 36" – 96" per panel
- Any height, from 38.5" – 50.5" per panel

VERTICAL ORIENTATION

- Any width, from 36" – 48" per panel
- Any height, from 38.5" – 98.5" per panel

WALL2WALL

Wrap an office from floor-to-ceiling in beautiful Clarus Wall2Wall glass to create the perfect space, or selectively integrate custom Clarus glass into your environment. Let your walls become your creativity canvas.

SPECS

- 1/4" Clarus tempered safety writing glass
- Non-staining writing surface
- Compatible with any marker, even permanent
- Clarus Opti-Clear finish and eased corners for safety
- Magnetic and non-magnetic options available
- Easily installs to existing drywall
- Channel and trim included
- 150+ standard colors available
- Custom colors available on request
- ColorDrop printing available — proprietary print technology, providing full-color and detailed graphics exclusively from Clarus

SIZES

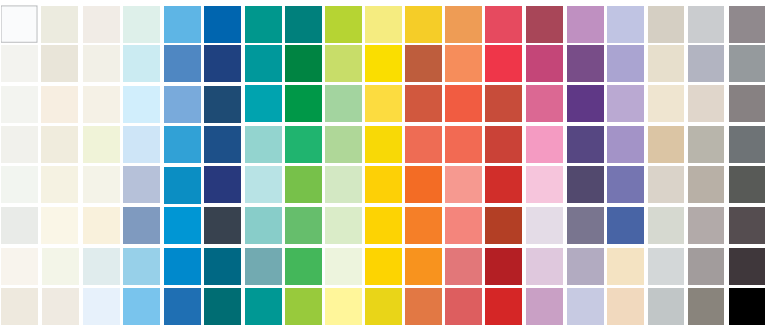
- Fit your space with Wall2Wall panels up to 144" each
- Custom sizes and shapes available, including cutouts, holes, and notches

COLORS BY CLARUS™

Craving some color? With over 150 standard colors available on demand — Colors by Clarus is your palette. The Clarus Design Studio carefully curated the perfect selection of colors, intentionally designed to be the richest and most vibrant hues available for glass.

Need a custom color? No problem. A Clarus designer can custom match any specification to build the perfect product for your space.

COLORS



Visit [Clarus.com/cbc](https://clarus.com/cbc) for our full Colors by Clarus library.

COLORDROP™

ColorDrop is Clarus’ proprietary, direct-to-glass, printing technology. ColorDrop allows you to print colorful images, graphics, and charts directly onto any glassboard, and it’s guaranteed to never fade or discolor.

COLORDROP PROCESS

Our specialized team applies a proprietary coating that promotes adhesion to each glassboard before it runs through the UV flatbed printer. No matter the shape or size of the glassboard or the detail of the print request, Clarus prints in 1440 DPI — creating high resolution images every time.

